

UNITED STATES
DEPARTMENT OF THE INTERIOR
GEOLOGICAL SURVEY

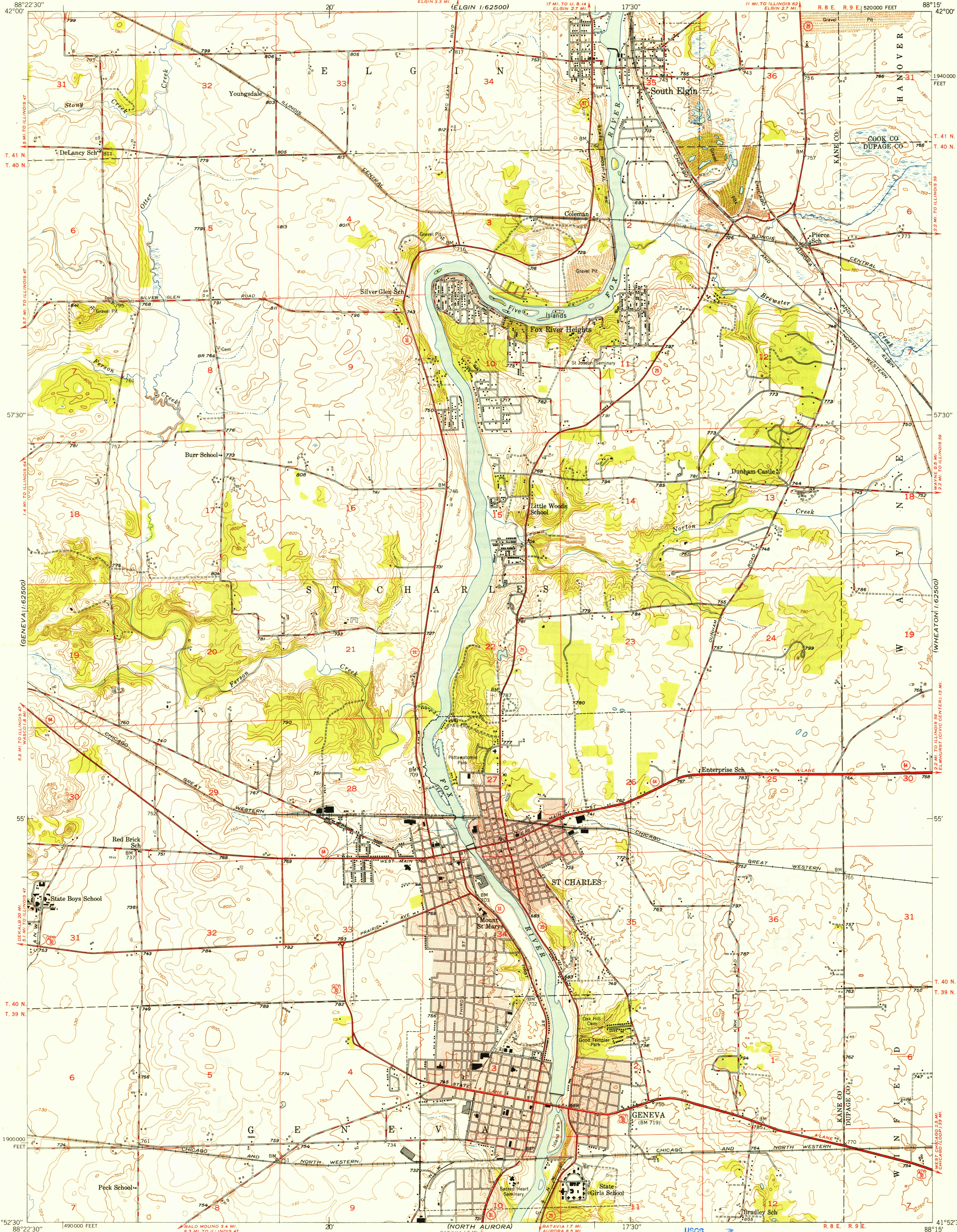
STATE OF ILLINOIS
ADLAI E. STEVENSON, GOVERNOR
DEPARTMENT OF REGISTRATION AND EDUCATION
NOBLE J. PUFFER, DIRECTOR
GEOLOGICAL SURVEY DIVISION, M. M. LEIGHTON, CHIEF
URBANA, ILLINOIS

GENEVA QUADRANGLE
ILLINOIS
7.5 MINUTE SERIES (TOPOGRAPHIC)
NE 1/4 GENEVA 15' QUADRANGLE

(BARRINGTON)
1:62500

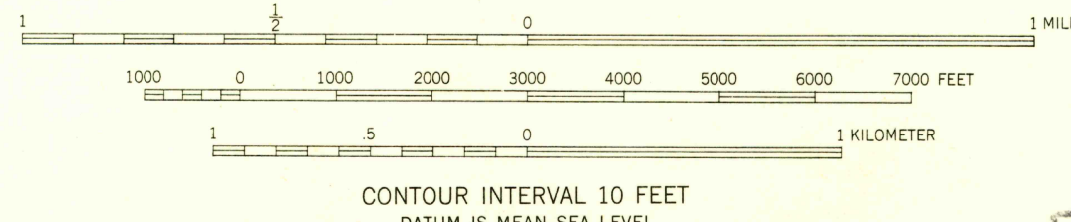
U.S.G.S.
FILE COPY
Inspection and Mapping

U.S.G.S.
FILE COPY
Inspection and Mapping



Mapped, edited, and published by the Geological Survey
Control by USGS and USC&GS
Culture and drainage in part compiled from
aerial photographs taken 1946
Topography by plane-table methods 1947-1948
Polyconic projection. 1927 North American datum
10,000-foot grid based on Illinois coordinate system,
east zone
Red tint indicates areas in which only
landmark buildings are shown

TRUE NORTH
MAGNETIC NORTH
APPROXIMATE MEAN
DECLINATION, 1948



CONTOUR INTERVAL 10 FEET
DATUM IS MEAN SEA LEVEL

THIS MAP COMPLIES WITH NATIONAL MAP ACCURACY STANDARDS
FOR SALE BY U.S. GEOLOGICAL SURVEY, WASHINGTON 25, D. C.
AND BY THE STATE GEOLOGICAL SURVEY, URBANA, ILLINOIS

USGS
Historical File
Topographic Division

U.S.G.S.
FILE COPY
Inspection and Mapping

ROAD CLASSIFICATION
HARD-SURFACE ALL WEATHER ROADS DRY WEATHER ROADS
Heavy-duty — 4 LANE 16 LANE Improved dirt —
Medium-duty — 4 LANE 16 LANE Unimproved dirt —
Loose-surface, graded, or narrow hard-surface —
U. S. Route State Route

GENEVA, ILL.
NE 1/4 GENEVA 15' QUADRANGLE
N4152.5-W8815.7.5

EDITION OF 1949

NOV 8 1949