

Opening of New LM Ericsson Exchanges

ALGERIA. A new crossbar switch exchange CP 400 for the government building in Algiers was officially opened at the end of 1964 by President Ben Bella. Among those present were the Vice President of the Council, Mohammed Said, the PTT Minister, M. Zaibek, the Minister of Social Affairs, M. Nekkache, the Head of the Long Distance Division, M. Hassani, the ambassadors of the Soviet Union, Korea and Albania, M. Gaude of the French Embassy, the Managing Director and Vice President of STE, Messrs. Duprez and Rosselin, the Director of the STE agency in Algiers, M. Cottavoz, and technicians from the Telephone Administration. The Head of the Inland Telecommunications Division, M. Snoussi, showed the visitors round the new installation and gave an account of the more important characteristics of the CP 400 system.

INDONESIA. A new crossbar exchange has recently been opened at Padang, Sumatra. It is housed in a new telephone building and has an initial capacity of 3000 lines. This exchange is one of the series of new exchanges for the conversion of the Sumatra network to automatic operation.

NIGERIA. A new crossbar exchange has been opened in Lagos in the government "Independence Building". This exchange is of type CP 400 and was delivered in 1964 by STE, Paris. It has a capacity of 4500 extensions, 45 outgoing and as many incoming exchange lines.

LEBANON. An ARM exchange was officially opened at Tripoli in December 1964 by the PTT Minister, Antoine Sehanoui, in the presence of the Governor of Lebanon, Bachir Al Awar, the Director of Telephony, A. Chémali, two former PTT Ministers and a number of representatives of the Administration, and of the church and local government. With the opening of this ARM exchange the 8000



President Ben Bella and (left) M. Hassani speaking to the operators during the inauguration of the new crossbar exchange.

Tripoli subscribers have automatic connection with 65,000 subscribers in the Beyrouth district. The cutover was completed according to programme and the equipment is working extremely well.

TURKEY. The first crossbar exchange in Turkey, at Afyon, Anatolia, was opened in August last year. The cutover, comprising 1000 lines of system ARF 102, attracted considerable interest both from the local population and the administration. The exchange is housed in a new building which also contains administrative offices and replaces an older automatic exchange of Rotary type. In conjunction with this installation a brief information course on LM Ericsson's crossbar system was held at Ankara, which met with a lively interest among the personnel of the head administration. Another 1000 AGF lines have recently been ordered for extension of the Ankara exchange Yenişehir.

Relay Interlocking on Geographical Circuit Principle at Swedish Railways

In November 1964 the Swedish Railways commissioned a relay interlocking of an entirely new type.

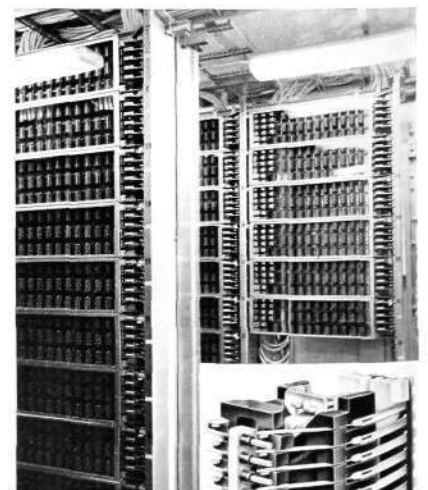
Safety relays and non-safety relays are combined in relay sets with one set for each point, signal, etc. There are altogether seven types of relay sets, the smallest of which contain 2 safety relays and 8 non-safety relays, and the largest 32 and 13, respectively. The relay sets are interconnected with 40-conductor cables.

The relay sets and interrack cables are tested in the factory. They take very little time to install. On a change in the track system or signal system the relay interlocking can be easily altered or added to by transfer of existing relay sets or the addition of new sets.

The safety relay is the new JRF relay with 8 contacts. The relays are assembled in BCH relay sets mounted on BDH racks.

The new signalling plant comprises about 80 points and 70 signals and thus employs some 150 relay sets. Relay sets, racks and cables were supplied by LM Ericsson, which has also received orders from the Swedish Railways for another 1200 relay sets for a second relay interlocking of the same type.

BDH rack with BCH relay sets for centrally switched points. (Inset) a safety relay JRF.



The new crossbar exchange at Padang is housed in a building of rather unusual appearance.

