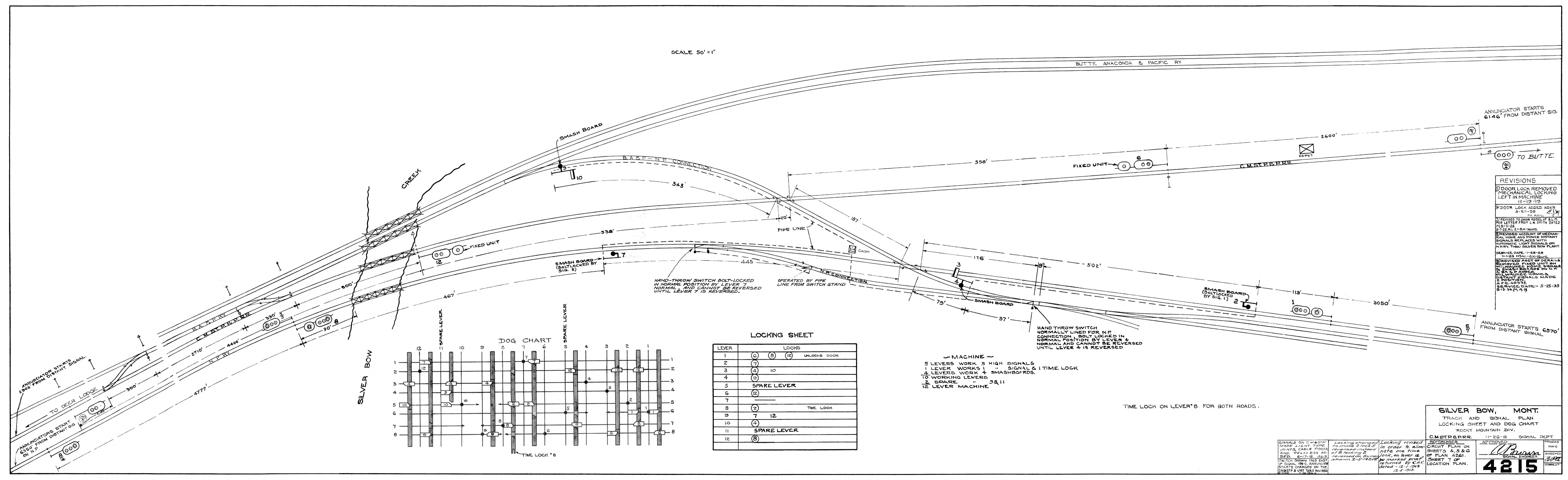


SCALE 50' = 1"

BUTTE ANACONDA & PACIFIC RY.

ANNUNCIATOR STARTS 6146' FROM DISTANT SIG.

ANNUNCIATOR STARTS 6570' FROM DISTANT SIGNAL



REVISIONS

- 5) DOOR LOCK REMOVED MECHANICAL LOCKING LEFT IN MACHINE 12-19-19
- 6) DOOR LOCK ADDED AGAIN 2-2-20
- 7) REVISED TO SHOW MODEL OF S.L.H. PER LETTER FROM L.W. SMITH DATED FEB-11-28.
- 8) REVISED ACCOUNT OF MECHANICAL HOME AND POWER DISTANT SIGNALS REPLACED WITH AUTOMATIC LIGHT SIGNALS ON N.P.RY. THRU SILVER BOW PLANT. SERVICE DATE - 1-28-28
- 9) REVISED ACCT OF DERAILS REMOVED. FIXED UNIT ON MILWAUKEE R.R. SIGNALS & SMASH BOARDS ON N.P. MILWAUKEE R.R. & DISTANT SIGNALS MADE 2 POSITION. SERVICE DATE - 5-15-35

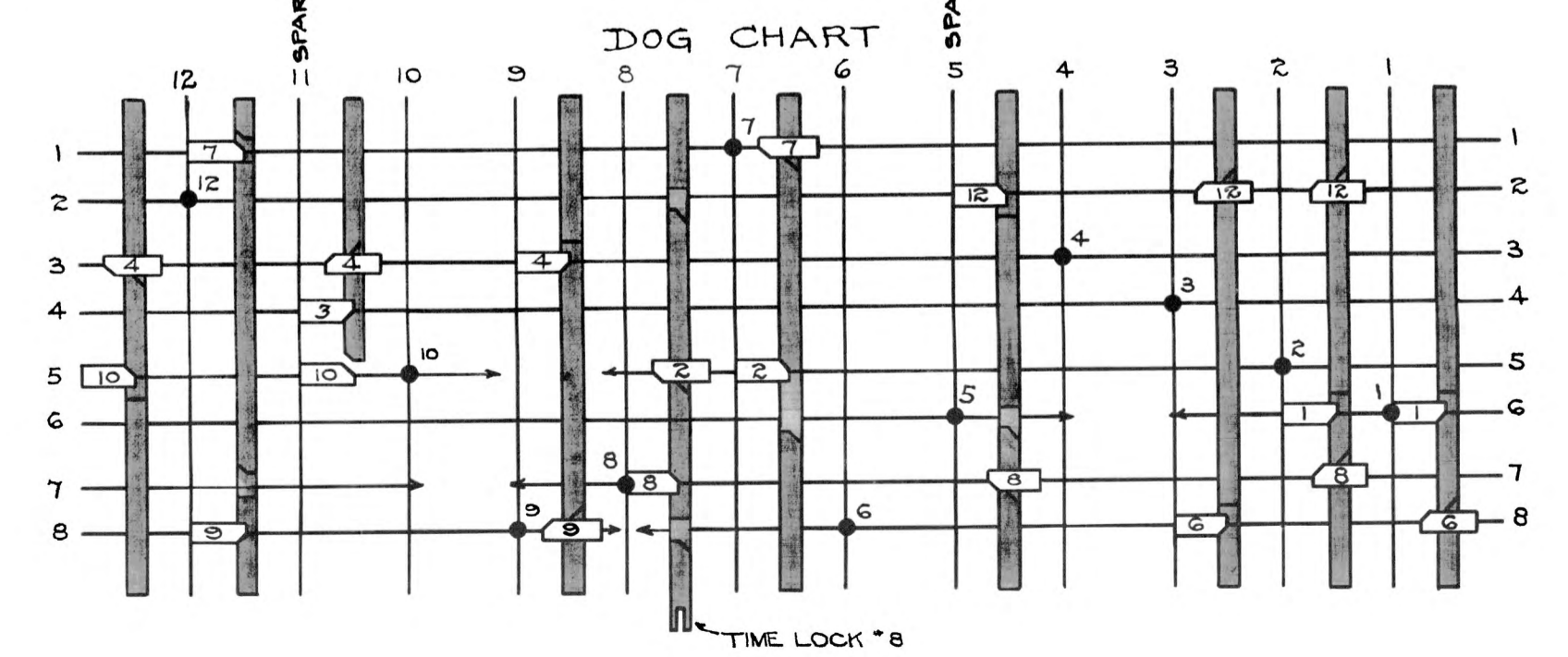
LOCKING SHEET

LEVER	LOCKS
1	(6) (8) (12) UNLOCKS DOOR
2	(7)
3	(4) 10
4	(9)
5	SPARE LEVER
6	(12)
7	
8	(2) TIME LOCK
9	7 12
10	(4)
11	SPARE LEVER
12	(8)

— MACHINE —  
 5 LEVERS WORK 5 HIGH SIGNALS  
 1 LEVER WORKS 1 " SIGNAL & 1 TIME LOCK  
 4 LEVERS WORK 4 SMASHBOARDS.  
 10 WORKING LEVERS  
 2 SPARE " 5 & 11  
 12 LEVER MACHINE

TIME LOCK ON LEVER 8 FOR BOTH ROADS.

SILVER BOW



SILVER BOW, MONT.  
 TRACK AND SIGNAL PLAN  
 LOCKING SHEET AND DOG CHART  
 ROCKY MOUNTAIN DIV.  
 C.M. ST. P. & P.R.R. 11-26-12 SIGNAL DEPT.  
 APPROVED: [Signature]  
 SHEET 7 OF LOCATION PLAN.  
**4215**

SIGNALS ON C.M. ST. P. & P.R.R. MADE LIGHT TYPE JOINTS, CABLE POSTS AND RELAY BOX ADDED. 6-17-16. J.S.B.  
 Locking changed to make stock reversed instead of locking 2 reverses. Form shown 2-5-1927.  
 Locking revised in order to eliminate one time lock on lever 12. No marked print returned by C.A.C. dated 12-5-1913.

ANNUNCIATOR STARTS 2906' FROM DISTANT SIGNAL  
 TO DEER LODGE  
 ANNUNCIATORS START 6350' FROM DISTANT SIG ON N.P.  
 4777'

2710'  
 4400'  
 330'  
 90'  
 600'

CREEK

SMASH BOARD  
 B.A.P. - N.P. CONNECTION  
 348'  
 20'  
 187'  
 PIPE LINE  
 CABIN  
 N.E. CONNECTION  
 445'  
 538'  
 SMASH BOARD (BOLT LOCKED BY SIG. 8)  
 17  
 HAND-THROW SWITCH BOLT-LOCKED IN NORMAL POSITION BY LEVER 7. NORMAL AND CANNOT BE REVERSED UNTIL LEVER 7 IS REVERSED.  
 OPERATED BY PIPE LINE FROM SWITCH STAND

558'  
 2600'  
 FIXED UNIT  
 C.M. ST. P. & P.R.R.  
 DEPOT  
 176'  
 8'  
 502'  
 79'  
 97'  
 SMASH BOARD  
 HAND THROW SWITCH NORMALLY LINED FOR N.E. CONNECTION. BOLT LOCKED IN NORMAL POSITION BY LEVER 4. NORMAL AND CANNOT BE REVERSED UNTIL LEVER 4 IS REVERSED

SMASH BOARD (BOLT LOCKED BY SIG. 1)  
 113'  
 3050'  
 1  
 6  
 7