

# Maintainers' Tool Houses

"Do you use a standard plan for maintainers' tool houses? If so please furnish construction plan and details."

## T. & P. Standard

E. P. Weatherby

Signal Engineer, Texas & Pacific  
Dallas, Tex.

The Texas & Pacific has provided a standard tool house for each signal maintainer on automatic signal territory. After experimenting with several different sizes and designs of houses, and different internal arrangements, we adopted as standard the house shown in accompanying plans, and have found it to be very satisfactory. Each house has a work bench, pigeon holes and shelves for materials and supplies, a desk for reports and correspondence, and a

drawer for stationery, in addition to space for housing a motor car.

The building rests on nine pile heads which bear upon 24-in. by 24-in. by 12-in. concrete footings. The front of the house includes the main doorway and the two small batten doors for the motor car. A runway made of 2-in. plank is provided for moving the car to and from its compartment. A window is provided on one side and another in the rear of the building, one being near the desk, and the other by the workbench. Shelving is built around the walls, as indicated in the illustration.

The sides of the building are of No. 117 Novelty drop siding, and the roof is of 1-in. by 8-in. shiplap covered with an asbestos roofing. The interior is floored with 1-in. by 4-in. D. & M. flooring. The floor level of the motor-car compartment is one foot lower than that of the main floor.

The open space for the motor car enables the maintainer to do any needed work on his cars on days when the weather is too bad to work outside. All houses have electric lights.

A gasoline tank, not shown on the plan, is buried in the ground near the door, with a pump located just inside the house so that the car can be filled without getting out of the house or, at night, without danger from open flame lights.

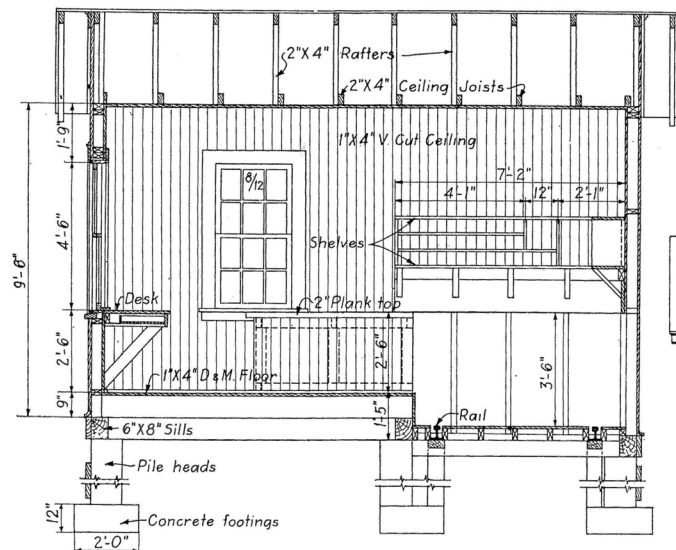
## Southern System Standard

W. J. Eck

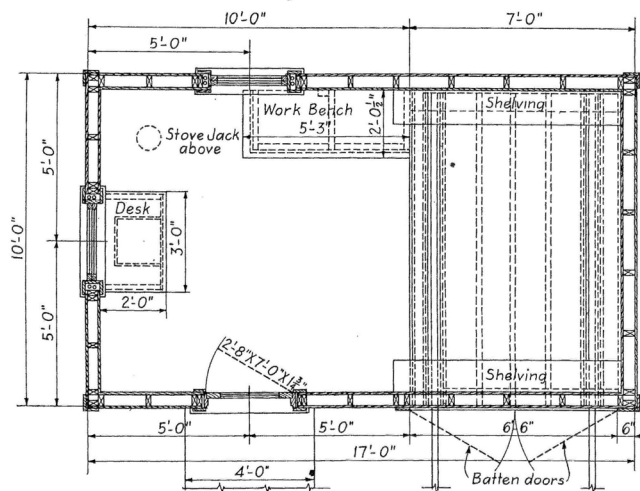
Assistant to Vice-President, Southern  
Washington, D.C.

The accompanying drawings illustrate the plan and arrangement of a signal maintainer's tool house on the Southern. This house is standard on the system, and we have found it possesses many advantages over the various structures used for housing tools and supplies previous to the adoption of the standard.

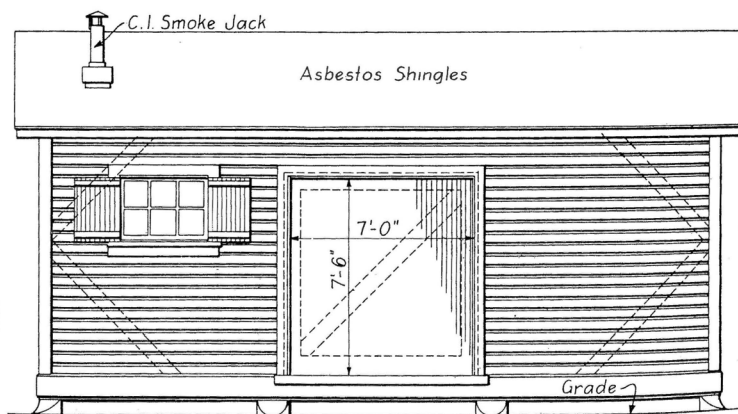
The maintainer's stock of supplies is kept in much better shape, and there is a marked reduction in the amount of stock carried on account of the systematic arrangement possible in the standard house. As far as possible material alike in quality and quantity is carried in the same compartment in the various maintainers' houses. This makes it easy for the maintainer to prepare requisitions for replacements and for the supervisor to check the amount of material on hand at any time.



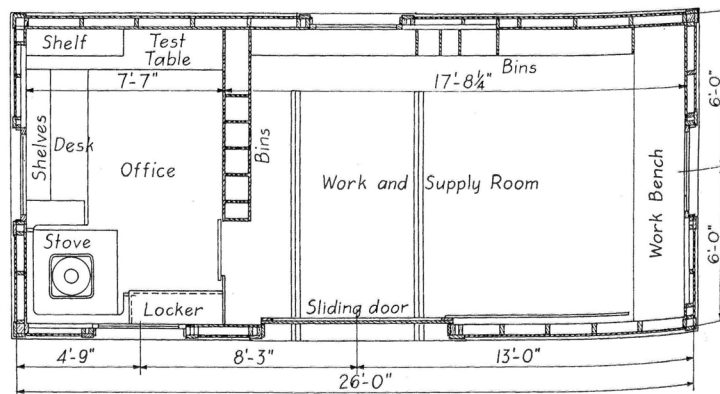
Longitudinal Section



Floor Plan  
Standard tool house on the Texas & Pacific



Side Elevation



Plan  
Standard tool house on the Southern