

Marion division, with headquarters at Rochester, Ind. F. Youngwerth has been promoted to assistant signal supervisor, Mahoning division, with headquarters at Youngstown, Ohio.

A. Frank, leading signal maintainer of the Lehigh Valley, was promoted recently to supervisor of signal and telegraph, with headquarters at Wilkes-Barre, Pa. Several months previously, W. B. Shafer was promoted from signal maintainer to supervisor of signal and telegraph, with headquarters at Buffalo, N.Y., and T. P. Heitzman, signal foreman, was promoted to supervisor of signal and telegraph, with headquarters at Jersey City, N.J.

### Supply Trade

S. E. Bramer, President of Copperweld Steel Company, Glassport, Pa., has announced the appointment of William J.



W. J. McIlvane

McIlvane, as Vice President in Charge of Sales and Assistant to the President. Mr. McIlvane was formerly General Manager of Sales for Copperweld.

W. J. McIlvane, vice president in charge of sales of Copperweld Steel Company



Harry J. Billica

announces that Harry J. Billica has joined the Copperweld Sales organization. Mr. Billica was formerly senior industrial

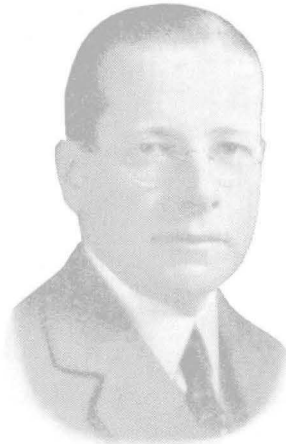
specialist in W.P.B.'s office of War Utilities at Washington, D.C.

Before his association with W.P.B., Mr. Billica was sales engineer for the

Indiana Steel and Wire Company, and prior to that was associated with Graybar Electric Company as Pacific district line material manager.

### Richard DeWolfe Brixey

Richard DeWolfe Brixey, President and Treasurer of the Kerite Insulated Wire and Cable Co., Inc., died on March 14,



Richard DeWolfe Brixey

1943. He was born in Seymour, Conn., in 1880, and educated in the Sheffield Scientific School of Yale University. During summer vacations he worked in the Sey-

mour plant of the Company, owned by his father.

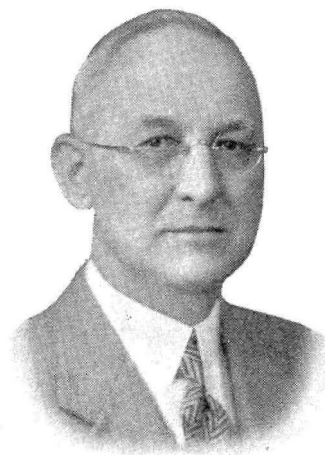
Mr. Brixey was graduated from Yale in 1902, and immediately assumed a full time job at the plant, where he worked through all the processes of manufacture. He was particularly interested in the later developments of Kerite for railroad signal service, a pioneer operation of the Seymour plant.

Coming to the New York office of the company in 1910, Mr. Brixey became general manager and reorganized the business under the present corporate name, The Kerite Insulated Wire and Cable Co., of which he became president.

He was formerly president of the Art Centre at 65 E. 56 St., New York, and until a few years ago, was president of its later development, the National Alliance of Art and Industry, now at 119 E. 19 St., New York. In addition to being a member of other associations and clubs, Mr. Brixey belonged to the following organizations: Association of American Railroads-Signal Section and Telegraph and Telephone Section, Railroad Machinery Club, New York Railroad Club, American Institute of Electrical Engineers, American Chemical Society, and the National Electrical Manufacturers Association.

### Herbert S. Balliet

Herbert S. Balliet, consulting engineer, of West Nyack, N.Y., died on March 29, 1943. He was born at Neffsville, Pa.,



Herbert S. Balliet

on February 26, 1868, and educated in the public schools, Lehigh University, and International Correspondence Schools. In 1883 Mr. Balliet entered railway service as a telegraph operator on the Berks & Lehigh (now Reading), and soon became station agent and dispatcher. From 1885 to 1888 he was manager of various offices for the Western Union Telegraph Com-

pany; from 1888 to 1893 he did special work for Western Union in the development of district messenger and synchronized clock service. In 1893 he became agent for the U. S. Express Co., Adams Express Co., and assistant district manager of the United Press Association at Philadelphia, Pa. During 1893-4 he was extra operator and special inspector of telegraph service for the Lehigh Valley at South Bethlehem, Pa. From 1894 to 1905 he was batteryman, maintainer, general foreman, supervisor of automatic signals, and assistant signal engineer for the same road. In 1905 he became engineer, maintenance of way, at the Grand Central Station and Terminal, New York, and served from 1905 to 1907 in the same position on the electric division of the N.Y.C. From 1913 to 1926 he was assistant terminal manager of the Grand Central Terminal. During the period 1907-1926 he was also signal engineer on the Electric Zone and Electric Division of the N.Y.C. In 1926 he became engineer, train control, on the N.Y.C. and served in this capacity until 1928, when he was promoted to the position of special engineer of the N.Y.C.

Mr. Balliet was secretary and treasurer of the Railway Signal Association in 1905-1906 and in 1918; secretary of the A.R.A., Signal Division, 1919-1920; secretary of the A.R.A., Signal Section, 1920-1930; president of the Railway Signal Association, 1910.

(Continued on page 222)