

News Briefs

UNION PACIFIC is saving up to 11 hours daily for reservation seekers telephoning the UP at Los Angeles and Chicago. Using an electronic automatic call distributing system, incoming calls are routed directly to passenger reservation clerks working at a "lazy Susan" train diagram turret. If clerks are busy, the call is automatically stored electronically, and a recording played to the caller explaining the situation so that he does not hang up. The equipment can store up to 24 calls, and these are released in the order received, thus preventing late calls from being connected ahead of any stored previously.

FEDERAL COMMUNICATIONS COMMISSION has adopted new rules for railroad radio service to provide for the authorization of automatic mobile repeaters for direct retransmission of signals to or from associated low power, hand-carried or pack-carried transmitters, in order to extend the range of communications beyond that normally possible with hand-carried or pack units. The rule action, proposed last June, also removes the existing "developmental" limitation on the operation of mobile relay stations in railroad service. The changes became effective April 1. The new rules provide that, when specifically authorized by the FCC, a regular, higher-powered railroad mobile radio station may be used for the automatic retransmission of signals to or from portable radio units.

DELAWARE, LACKAWANNA & WESTERN has ordered transistorized 64-volt "Stan-Pac" two-way radios for 23 diesel locomotives from Motorola.

SOUTHERN PACIFIC has received ICC approval to install CTC on 99 miles of single track and 17 miles of double track, all between East Yard, Ariz. (east of Yuma) and Gila. The territory is to be controlled from a machine at Tucson.

LONG ISLAND has ordered CTC equipment from Union Switch & Signal—Division of WABCo. for installation on 6.5 miles of double-track and 16 miles of single-track mainline, all for double direction running, from Hicksville to Smithtown (RS&C, March 1960, p. 38).

ILLINOIS SUPREME COURT has upheld a state commerce commission order requiring Central Illinois Public Service Co. to pay half the cost (estimated to be \$142,784) of converting an

(Continued on page 47)

PENNSYLVANIA
Allentown — 1941 Hamilton Street
Hemlock 4-9341 • A. Stang, Jr.
Erie — 1308 Irwin Drive
Erie 6-4231 • R. F. Grossett
Greensburg — 15 Willow Street
Greensburg 7560 • J. P. Fitzurka, Jr.
Harrisburg — 1039 S. Thirteenth St.
Cedar 8-7303 • S. W. Shultz
*Philadelphia 7 — 910 Cherry St.
Walnut 2-5405 • R. P. Grosse
*Pittsburgh 12 — 900 Ridge Ave.
Fairfax 2-4100 • E. A. Grimes
West Reading — 333 Buttonwood St.
Franklin 6-1581 • J. W. Riddell

RHODE ISLAND
Providence 3 — 194 Richmond St.
Dexter 1-8100 • R. D. Buffington

SOUTH CAROLINA
Columbia — 710 Lady St.
Alpine 2-2125 • J. M. Littleton, Jr.
Greenville — 302 West Washington St.
Cedar 9-1338 • T. M. Floyd, Jr.

SOUTH DAKOTA
Sioux Falls — 300 N. Phillips St.
Sioux Falls 4-5621 • J. A. Kirk

TENNESSEE
*Bristol — 536 Anderson Street
South 4-7101 • H. E. Smither
*Chattanooga 4 — 210 N. Highland Park Ave.
Madison 4-3351 • J. R. Feeney
Knoxville 1 — 1727 Grand Ave. S. W.
Knoxville 3-6171 • L. A. Womeldofr
Memphis 4 — 1474 Lamar Ave.
Broadway 4-7150 • J. H. Pearson III
*Nashville — 125 16th Ave. N.
Alpine 4-6501 • H. B. Hall

TEXAS
Abilene — 1601 South Treadaway
Abilene 2-2861 • M. A. Elliston
*Amarillo — 601 E. 2nd Ave.
Drake 2-6778 • S. S. Rutledge
Arlington — 104 North Collins
Arlington 5-3386 • S. A. Todd
Austin — 214 E. 3rd Street
Greenwood 8-5674 • H. J. Franz
Beaumont — 2155 Highway 90
Terminal 2-8484 • L. A. Haley
Corpus Christi — 1311 Agnes Street
Tulip 4-6374 • E. P. Kempen
*Dallas 26 — 717 Latimer St.
Riverside 2-6451 • C. C. Ress
El Paso — 3513 Rosa St.
Keystone 2-3981 • K. Brown
*Fort Worth 7 — 1107 Foch St.
Edison 5-4523 • E. J. Hoff
*Houston 3 — 1702 Cullen Blvd.
Capitol 8-4571 • J. T. Kinney
San Antonio 8 — 1223 N. Hackberry St.
Capitol 7-9246 • R. N. Ness

UTAH
*Salt Lake City 16 — 336 N. 3rd West St.
Elgin 9-8771 • D. B. Eardley

VERMONT
Rutland — 325 West St.
Prospect 3-2726 • E. C. Hendrickson

VIRGINIA
*Norfolk 8 — 1081 West 35th St.
Madison 5-7441 • C. H. Gaunt
*Richmond 19 — 10 S. 6th St.
Milton 4-3491 • W. E. James
*Roanoke 5 — 1125 Salem Ave. S. W.
Diamond 3-3615 • W. K. Collum

WASHINGTON
*Seattle 4 — King & Occidental Sts.
Mutual 2-0123 • J. P. Lawton
Spokane 1 — West 1033 Gardner Avenue
Fairfax 7-6611 • H. O. Colburn
*Tacoma 1 — 2112 A Street
Market 7-0164 • R. J. Franzen

WEST VIRGINIA
Charleston 2 — 720 Crescent Road
Dickens 4-2371 • J. R. Harlan

WISCONSIN
Green Bay — 1140 North Irwin Avenue
Hemlock 7-3284 • J. W. Peterson
Madison 5 — 103 North Park Street
Alpine 5-0005 • B. R. Lind
Milwaukee 2 — 180 N. Jefferson St.
Broadway 6-8400 • J. L. Hoagland

*Grand Rapids 2 — 432 Monroe Ave., N. W.
Glendale 1-2701 • S. A. Faren
Lansing 10 — 421 E. Elm Street
Ivanhoe 7-5075 • H. G. Mitchell

MINNESOTA
*Duluth 6 — 1730 West Michigan Street
Randolph 2-6685 • R. K. Jensen
*Minneapolis 15 — 824 South Fourth St.
Federal 6-1621 • N. W. Zilch
*St. Paul 2 — 362 Dayton Ave.
Midway 6-2631 • W. P. Summers

MISSISSIPPI
Jackson — 154 E. Porter St.
Fleetwood 4-2585 • A. N. Saxon

MISSOURI
*Kansas City 8 — 1644 Baltimore Ave.
Baltimore 1-1644 • P. D. Barber
*St. Louis 10 — 600 S. Taylor Ave.
Jefferson 1-4700 • M. P. Johns
Springfield — 524 St. Louis St.
Springfield 2-0587 • G. A. Griffin

MONTANA
Butte — 604 E. Aluminum St.
Butte 3233 • R. F. Murtha

NEBRASKA
*Omaha 5 — 3626 Martha St.
Webster 7676 • F. M. Sholders

NEW HAMPSHIRE
Manchester — 103 Hampshire Lane
National 4-4341 • P. A. Dorn

NEW JERSEY
Newark 5 — 50 McWhorter Street
Market 2-5100 • J. P. McCarthy
North Brunswick — 1300 Livingston Ave.
Charter 9-4300 • J. J. McEllen

NEW YORK
*Albany 4 — 40 Van Woert Street
Albany 5-1563 • H. J. Fitzpatrick
Binghamton — 39 Dennison Ave.
Binghamton 2-5926 • M. E. Ransom
Buffalo 4 — 180 Perry Street
Washington 3700 • J. T. Baker
*New York City — 21-15 Bridge Plaza North,
Long Island City
Exeter 2-2000 • F. C. Sweeney
Rochester 6 — 175 Dewey Ave.
Baker 5-7700 • H. G. Linder
Garden City, L. I. — 1 South St.
Pioneer 1-3900 • E. R. Liberg
Larchmont, N. Y. — 372 Post Road
Tennyson 4-7400 • M. W. Meacle
Syracuse 1 — Deere Rd. & Industrial Pkwy.
Hempstead 7-8333 • W. T. Bronson

NORTH CAROLINA
Asheville — 221 Patton Avenue
Alpine 3-4761 • H. S. Corey, Jr.
*Charlotte 1 — 1451 Bryant St.
Franklin 5-9831 • A. A. Wilson
Raleigh — 1113 Downtown Blvd.
Vance 8-4321 • M. C. Shorey
Rocky Mount — 821 Planters Street
Rocky Mount 2-5171 • L. A. Shaw
Winston-Salem 1 — 955 Brookstown Ave.
Park 4-2461 • J. W. Van Dorsten

OHIO
Akron 10 — 975 E. Tallmadge Avenue
Jefferson 5-4143 • D. J. Mertzlufft
*Cincinnati 10 — 115-West McMicken Ave.
Main 1-0600 • A. L. Leyer
*Cleveland 3 — 1100 E. 55th St.
Henderson 2-2500 • E. P. Jones
Columbus 8 — 1200 Kinnear Road
Hudson 6-4391 • C. E. Knab
Dayton 1 — 332 West Monument Ave.
Baldwin 4-5665 • C. C. McGraw
Toledo 8 — 1333 East Manhattan Blvd.
Randolph 9-1641 • E. N. Cundiff
Youngstown 1 — 602 West Royan Ave.
Riverside 4-0122 • M. J. Sullivan

OKLAHOMA
Oklahoma City 2 — 12 E. California St.
Central 5-9351 • A. C. Hughes
Tulsa 4 — 2406 E. 12th St.
Webster 6-1212 • E. H. Williamson

OREGON
Eugene — 2380 W. Broadway
Diamond 4-2224 • W. E. Isell
*Portland 8 — N. E. 60th St. & Banfield
Atlantic 8-5661 • S. L. Dye

*At these locations, there are Graybar Representatives who have special experience in handling railroad electrical requirements.

964

100,000 electrical items
are distributed
THROUGHOUT THE NATION ...



OFFICES AND WAREHOUSES IN OVER 130 PRINCIPAL CITIES

CHECKS and SPUR CUTS are Prime Decay Spots

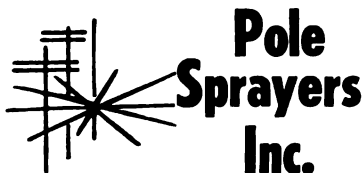


and POLE SPRAYERS give them EXTRA ATTENTION

Older poles just naturally suffer from checks and spur cuts... trouble areas where moisture collects. This makes them vulnerable to the fungus decay condition known as "Shell Rot" which lessens pole life and impairs safety of linemen.

POLE SPRAYERS, INC. — Men, methods and materials — is a pioneer in the art of above-ground inspection and treatment for standing poles. Using proven preservatives, special attention and extra saturation is given to all critical areas. Fungus decay is stopped cold... reinfestation is prevented. Poles take on new life, last longer, costly replacements are delayed for years to come. Increased safety of your climbing personnel is assured.

You will be surprised to learn how little it costs to adopt an above-ground *Pole Spray* program. Get the facts. Write **POLE SPRAYERS, INC.**, 990 Ellicott Street, Buffalo 9, N. Y.



**Pole
Sprayers
Inc.**

SERVING RAILROADS SINCE 1935

NEWS BRIEFS

(Continued from page 45)

Illinois Central signal system on which transmission line interference produced false signals. The opinion closes a case which began seven years ago.

IC's signal system—continuous automatic train-stop operating on 60 cycles ac—was installed in 1926 and first developed trouble due to introduction of foreign current in 1948. Testimony before the commission indicated that the practical solution would be conversion of IC's signal system to 100 cycles ac. But the power company contended that IC could not recover the cost of conversion in the absence of evidence proving the power company negligent.

The supreme court ruled that "authority for the exercise of jurisdiction over the power company is not that it has acted negligently or with malice. Rather the power of the commission arises from the fact that the exercise of the power company's franchise by the transmission of current in close proximity to the railroad's tracks has created a condition which caused the existence of false signals, and such signals constitute a hazard to the safety of the public and the employees of the railroad."

The court also ruled that "the commission has found a grave hazard to public safety existed by reason of foreign current escaping from the power company transmission lines. The state commerce commission could solve this problem by exercising its undoubted jurisdiction over the facilities of the power company, but the cost of moving the power lines away from the tracks of the railroad would be excessively high and would place an undue burden on its customers by an ultimate increase in its rate base. The railroad could, and has, converted its facilities at far less cost."

CENTRAL OF GEORGIA has ordered CTC equipment from Union Switch & Signal—Division of WABCo. for an extension of CTC in the Trammells-Norris Jct., Ala., territory, to be controlled from Sylacauga, Ala. A 2½-ft style C addition will be made to an existing style C machine (RS&C, March 1960, p. 40).

LONG ISLAND signal maintainers now have colorful new vests to make them more visible to locomotive engineers while they are stooping down at trackside at night. The reversible vests are bright yellow and have two bars of silver reflecting tape across the back for greater visibility.

SIGNAL BATTERIES. Nicad Division, Gould-National Batteries, Inc., offers Bulletin 164, which describes and illustrates nickel cadmium alkaline storage batteries designed especially for railway signal service. Also provided is a reference table that lists the number of Nicad cells gen-

(Continued on page 48)

"More or Less"
THE BEST



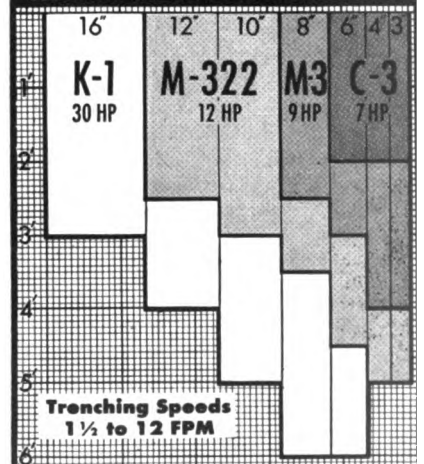
Other trenchers cost "More or Less"
Other trenchers dig "More or Less"

**BUT DITCH WITCH
PRODUCES MORE
TRENCH FOR
LESS
MONEY**



Model
M-322
Pictured

TRENCH SIZES FOR 4 MODELS:



- USE FOR:
- Utility Services
 - Gathering Lines
 - Signal Lines
 - Sewer Laterals
 - Road Crossings
 - Sprinklers
 - Footings, etc.

CHARLES Machine Works, Inc.
688 Birch St., Perry, Okla.

To Locate Distributor, Look Under "Contractors Equipment" in 1960 Metropolitan Telephone Directory Yellow Pages for Ditch Witch Trade-mark; or Call Collect FE 6-4404, Perry, Okla.

NEWS BRIEFS

(Continued from page 47)

erally used with the more common voltages employed in signal service. **Nicad Division, Gould-National Batteries, Inc., Dept. RSC, Easthampton, Mass.**

Railroad Personnel

CHESAPEAKE & OHIO. **Russell H. Behymer**, general signal inspector at Richmond, Va., retired February 29.

RUTLAND. **Harold J. Nichols**, superintendent of telegraph, appointed operating superintendent.



L. H. McFadden



John J. Maloney



R. A. Hendrie



Harry C. Macomber

GREAT NORTHERN. As reported in *Railway Signaling and Communications*, March 1960, page 46, **L. H. McFadden**, superintendent of communications at St.

Paul, has retired. **John J. Maloney**, formerly superintendent of communications at Spokane, Wash., is now superintendent of communications, system, at St. Paul. Biographical sketches of Messrs. McFadden and Maloney were published in the March issue.

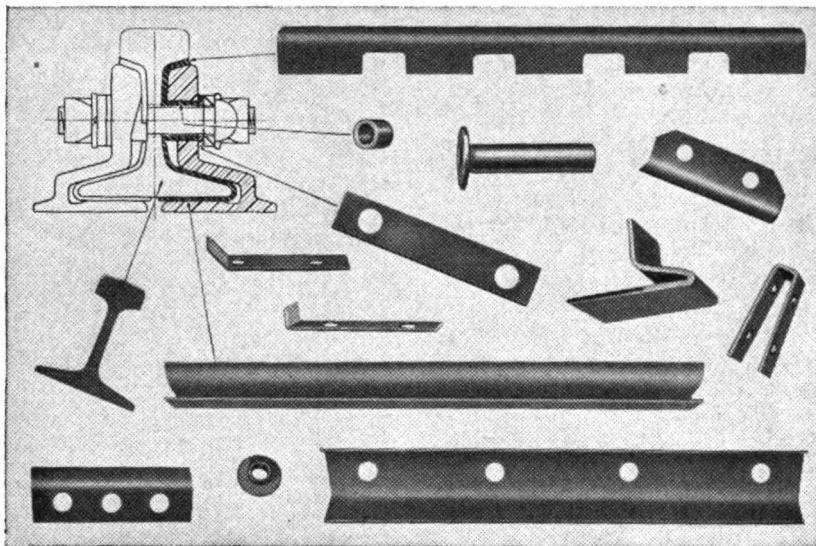
MISSOURI PACIFIC. **R. A. Hendrie**, general superintendent of communications, retired on February 29 and has been succeeded by **Harry C. Macomber**, superintendent of communications. **J. Robert French**, assistant superintendent of communications, has succeeded Mr. Macomber and **John W. Hinkle**, communications engineer, has succeeded Mr. French. All have headquarters at St. Louis.

Mr. Hendrie was born in Bevier, Ky., February 4, 1890. He entered railroad service as a telegraph operator on the Louisville & Nashville. From 1909 to 1928 he was employed on the Missouri-Kansas-Texas, successively as telegraph operator, wire chief, telegraph inspector and telephone engineer. In 1928 he went with the MP as telegraph and telephone engineer, being promoted to assistant superintendent of telegraph in 1939, superintendent of communications in May 1951, and general superintendent of communications later in the same year. Mr. Hendrie is a past-chairman of the Communications Section.

Mr. Macomber, a native of Oneida, N. Y., was educated in electrical engineering at Brooklyn (N. Y.) Polytechnic Institute and Washington University. He worked as a radio engineer in New York prior to joining the MP in 1950 as a telephone maintainer at Alexandria, La. In 1951 he was advanced to assistant electronic engineer at Osawatomie, Kan., and later in the same year to electronic engineer at St. Louis. He was appointed superintendent of communications in 1955.

Mr. French started with the MP in 1925 as a clerk in its mail and express department, becoming chief clerk in 1934 and office manager in 1940. He transferred to the telegraph department in 1945 as chief clerk to the superintendent of telegraph, and in 1951 was appointed assistant superintendent of communications.

(Continued on page 50)

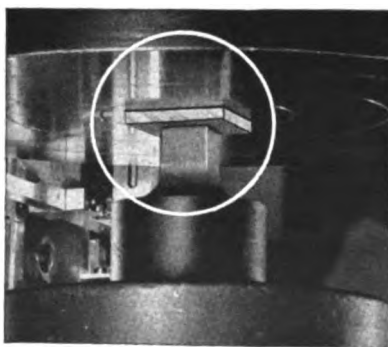


Get long-life, trouble-free insulation with CDF DIAMOND® TRACK FIBRE

RIGID QUALITY CONTROL assures uniform high quality of CDF Diamond Track Fibre.

CDF WILL ACCURATELY MACHINE AND FORM Diamond Track Fibre head and base plates, end-posts, bushings, and switch and gage rod bearings. We rigidly adhere to your specifications.

CDF IS A BIG, RELIABLE SOURCE of supply for track fibre, insulating tapes, laminated and molded plastics. Call your nearest CDF Sales Engineer (listed in your Railway Supply Industry Yearbook). Delivery is dependable. Requests for quotations and engineering service receive prompt attention.



MEETS ALL AAR TEST REQUIREMENTS for track fibre! CDF Diamond Track Fibre also conforms to AAR Signal Section specifications for Hard Fibre. CDF research constantly improves compressive strength and impact resistance.



CONTINENTAL-DIAMOND FIBRE

A SUBSIDIARY OF THE **Bush** COMPANY • NEWARK 105, DEL.

In Canada: Continental-Diamond Fibre of Canada, Ltd., 46 Hollinger Road, Toronto 16, Ontario

NEWS BRIEFS

(Continued from page 48)

Mr. Hinkle, formerly with the Texas & Pacific, became communications engineer of the MP last year. A photograph and sketch of his career appeared in Railway Signaling and Communications, November 1959, page 50.

Supply Trade News

AUTOMATIC ELECTRIC SALES CORP. Harris W. Fuller named a staff engineer for the carrier and radio sales division at the company's northeastern district office in New York. Prior to joining AE in 1959 he was an equipment engineer for Western Electric Co.

NATIONAL CARBON CO. Curry E. Ford, new products marketing manager, has been named director of marketing for the company's complete line of industrial carbon and graphite products.

BUCKEYE TELEPHONE & SUPPLY CO. Andrew Sabo appointed field representative for Indiana, eastern Illinois and northwestern Kentucky. He was previously a distributor salesman for Graybar Electric Co. and sales and service representative for Michigan Bell Telephone Co.

COPPERWELD STEEL CO. Gordon Cavanagh promoted to product manager for Alumoweld, the company's aluminum covered steel wire and strand. Mr. Cavanagh will continue to be located at Glassport, Pa., where he was development engineer.



Gordon Cavanagh



A. H. Lindsay

GOULD-NATIONAL BATTERIES, INC. A. H. Lindsay has been named manager of railroad sales for Nicad Division, Easthampton, Mass. He has been with Nicad since 1948 and prior to his recent appointment was in charge of customer service and application engineering.

F. B. Steele, Chicago district manager of the Industrial Division, has been appointed Chicago regional manager of that division.

Are you expanding your communications?

I have 15 years engineering experience in wire, carrier, micro-wave, and radio communications planning and operation. Box 46, Railway Signaling and Communications, 79 West Monroe Street, Chicago 3, Illinois.

D. W. ONAN & SONS INC. Onan Eastern Corp., Long Island City, N. Y., has been appointed distributor for the New York City, northern New Jersey and Connecticut area. Officers of the new company are Ralph Siegel, president; Martin Taylor, vice-president and sales manager; and Leonard Freeman, assistant secretary and sales engineer. All were previously associated with John Reiner & Co., distributor for Onan in this area since 1945.

ANSONIA WIRE & CABLE CO. John L. Marsh has resigned as vice-president to form his own sales company, John L. Marsh & Associates. The new company will represent Ansonia in the Southeast, with offices in Jacksonville, Fla.

PAPER MANUFACTURERS CO. Has begun construction of a West Coast plant in Newark, Calif., which will have 800,000 cubic feet of manufacturing and warehouse space. Joseph A. Morris, who has been manager of the company's Indianapolis division, will manage the new factory. Paul Coady, production manager of the main factory in Philadelphia, has been named to succeed Mr. Morris.

ALUMINUM CO. OF AMERICA. James A. Burt, sales engineer at the Cleveland district sales office, has been appointed manager of railroad sales.

Obituary

R. J. BEILSMITH, who retired in 1955 as assistant superintendent of communications of the Wabash, died March 13. Mr. Beilsmith had been with the Wabash since 1913. He was made superintendent of telegraph in 1930 and assistant superintendent of communications in 1948.

REED E. CLARK, 51, supervisor of signal construction of the Chesapeake & Ohio, at Huntington, W. Va., died February 24.

W. A. ROBERTS, 74, who retired as superintendent of telegraph of the Texas & Pacific in 1952, died on February 29.

ANDREW J. LOUGHREN, retired assistant general sales manager of the Primary Battery Division of Thomas A. Edison Industries, died on February 26. Mr. Loughren retired in 1948 after completing 37 years of service with the Edison Company.



Editor's Corner

Thanks, Signal Section: Beginning last month, we have been presenting abstracts from the AAR Signal Section's Visual Aid Training Program Presentation as part of our Data Sheets. We are very grateful to the Signal Section, and to its secretary, R. H. C. Balliet, for permission to abstract this material. The members of the Special Committee on Education and Training of Signal Department Employees have done an excellent job in preparing this material. It would behoove the railroads to make use of these slide presentations, for nothing can ever replace the instructor who is present to answer questions and add supplementary explanations when the student's learning process requires it. The Data Sheets can provide the take-home material for reference and further study. They can also provide a review for those who need it.

Readers Like Data Sheets: In a postcard survey of readers of our December issue, 41 per cent thought our Data Sheets were "very good," 43 per cent "liked" them, and only 16 per cent were "not interested." Some sample comments: "Data

Sheets rate first with me" (Signal Maintainer).—"Your Data Sheets are something needed for a long time" (Supervisor Communications and Signals).—"Have Data Sheets made available individually or in bound books for distribution at a nominal charge" (General Superintendent Communications).

Should We Reprint? We have had several requests for reprints and we are considering reprinting the first 27, Meters and Test Equipment. The cost would be less than \$1; as low as 50 cents if enough are requested. If you would like to have a booklet of these Data Sheets, would you please drop us a postcard indicating how many you would like to have. We will gauge the quantity to be reprinted and announce availability and price in a future issue. Address your postcards or letters to Editor, Railway Signaling and Communications, 30 Church St., New York 7, N. Y.

Bob Barber
Associate Editor