

Notes:

Place 300 feet each side of Railroad Grade Crossing, where trains must come to full stop and may be used at other approved locations.

Face of sign to be painted Signal Red. Back of sign Black.

Lamp to be equipped with red lens.

Sign to be used only where conditions prevent the use of sign S-176.

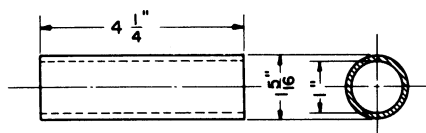
When Commercial Power is available use Electric Lamp shown as Item 1, Signal Standard Plan S-113-B.

When Commercial Power is not available use Edison Carbonaire Battery 2-S-J-1 or equal, with 2.9V-.150 Amp. SC Bayonet Base S-8 clear lamp bulb, G.E. Company.

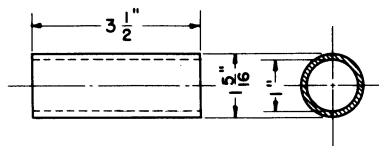
Approved: 
Chief Eng'r. Maintenance

Approved: 
Chief Eng'r. Comm. & Sigs.

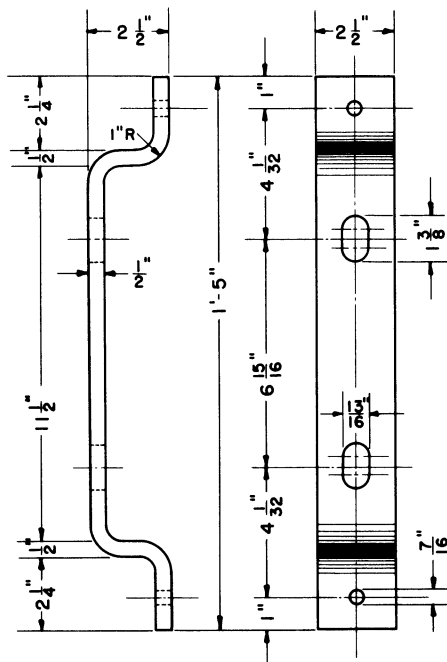
BALTIMORE & OHIO RAILROAD
DWARF STOP SIGN
 Office of Chief Engineer Comm. & Signals
 Baltimore, Md.
 April 12, 1951



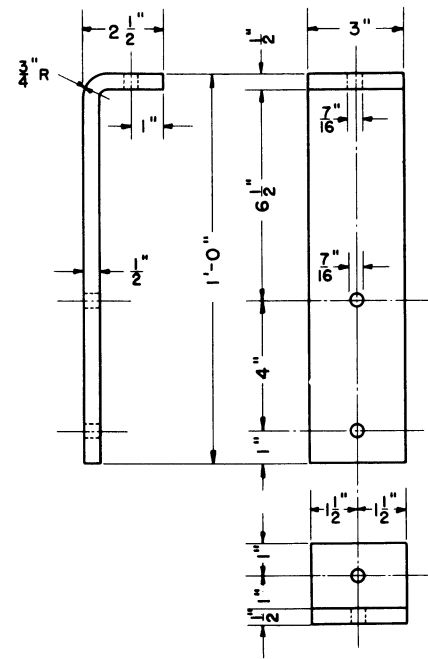
1" PIPE SEPARATOR - 1781



1" PIPE SEPARATOR - 1782



BRACKET - 1783

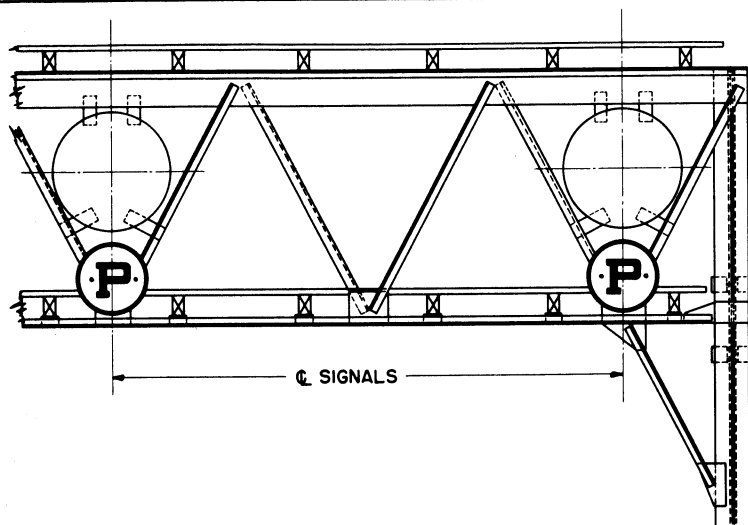


BRACKET - 1784

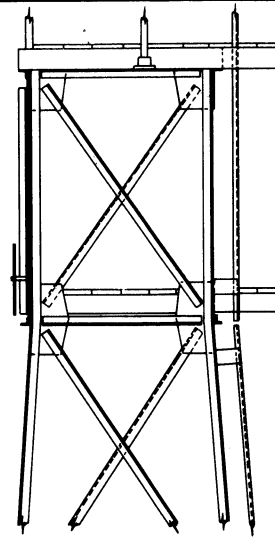
APPROVED: 
CHIEF ENG'R. MAINTENANCE

APPROVED: 
CHIEF ENG'R. COMM. & SIGS.

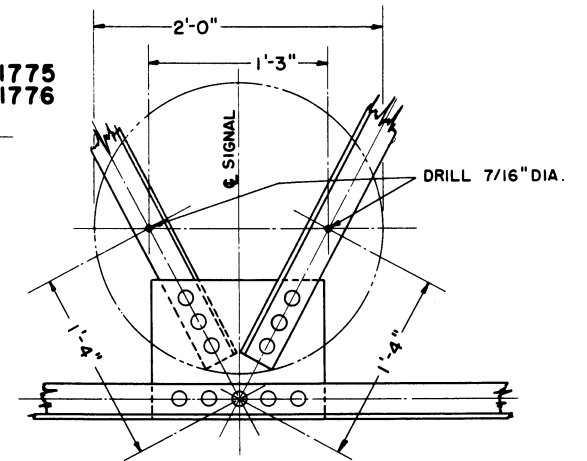
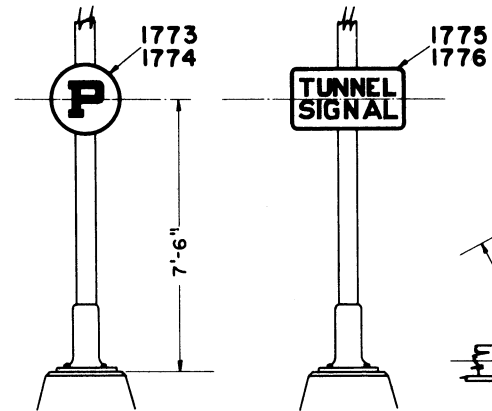
BALTIMORE & OHIO RAILROAD
MARKER FITTINGS
OFFICE OF CHIEF ENGINEER COMM. & SIGNALS
BALTIMORE, MD.
FEB. 15, 1949



APPLICATION TO SIGNAL BRIDGE

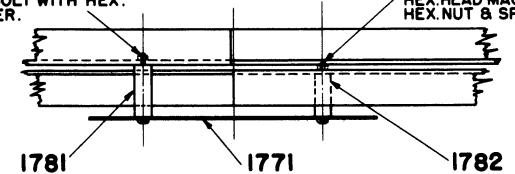


APPLICATION TO GROUND SIGNAL MASTS



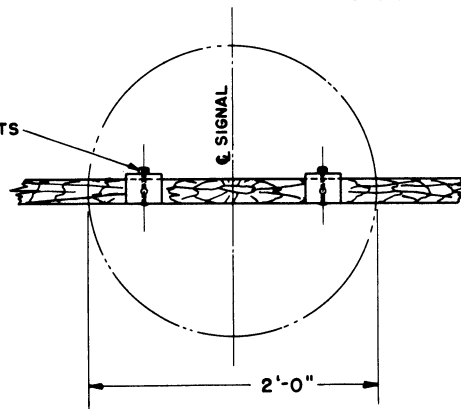
3/8" X 5 1/2" CADMIUM PLATED
HEX. HEAD MACHINE BOLT WITH HEX.
NUT & SPRING WASHER.

3/8" X 4 3/4" CADMIUM PLATED
HEX. HEAD MACHINE BOLT WITH
HEX. NUT & SPRING WASHER.

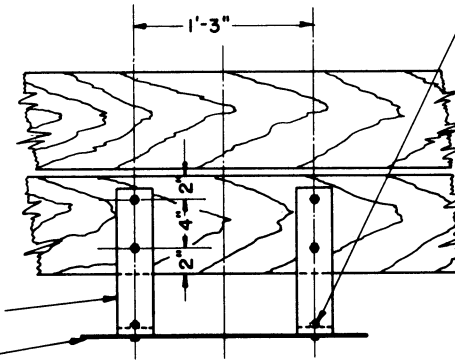


ENLARGED VIEW SHOWING
APPLICATION TO SIGNAL BRIDGE

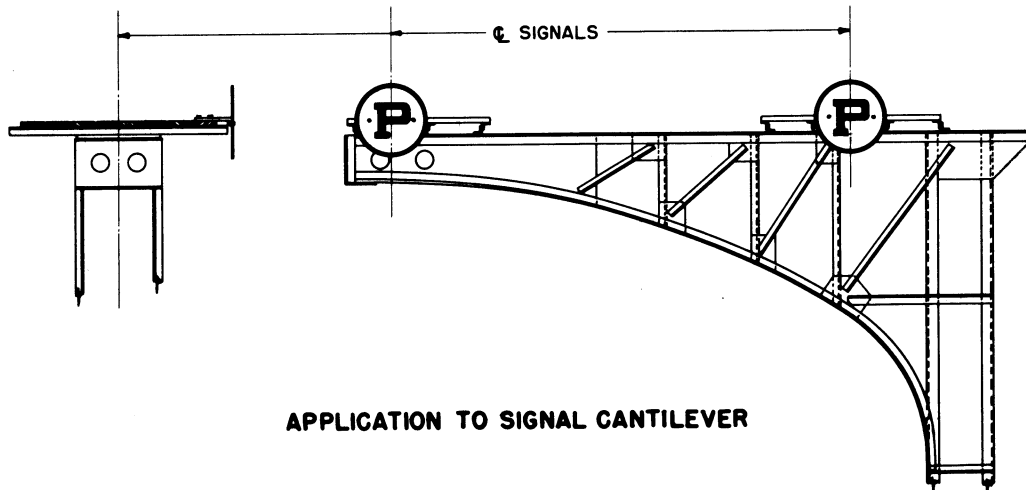
3/8" X 3" CARRIAGE BOLTS



3/8" X 1 1/4" CADMIUM PLATED
HEX. HEAD MACHINE BOLTS WITH
HEX. NUTS & SPRING WASHER.



ENLARGED VIEW SHOWING
APPLICATION TO SIGNAL CANTILEVER

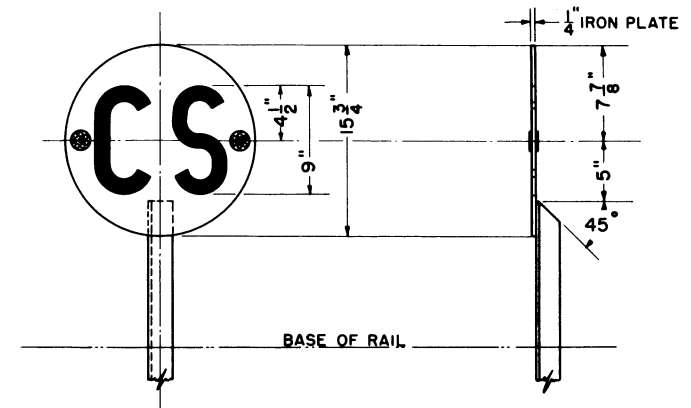
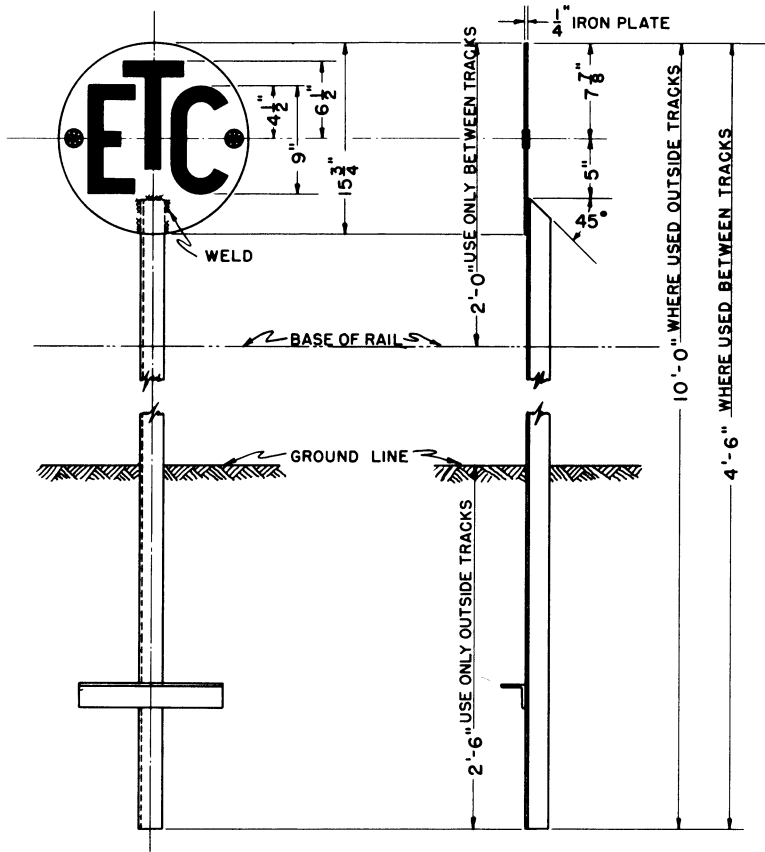


APPLICATION TO SIGNAL CANTILEVER

APPROVED: 
CHIEF ENGR. MAINTENANCE

APPROVED: 
CHIEF ENGR. COMM. & SIGS.

BALTIMORE & OHIO RAILROAD
**METHODS OF APPLYING
GRADE AND TUNNEL MARKERS**
OFFICE OF CHIEF ENGINEER COMM. & SIGNALS
BALTIMORE, MD.
FEB. 10, 1949



END OF TRACK CIRCUIT SIGN COMPLETE

SIGN FOR USE BETWEEN TRACKS - 1801
SIGN FOR USE OUTSIDE TRACKS - 1802

CUT SECTION SIGN COMPLETE

(USED ONLY ON SPECIAL INSTRUCTIONS)
SIGN FOR USE BETWEEN TRACKS - 1803
SIGN FOR USE OUTSIDE TRACKS - 1804

NOTE:

SIGNS TO BE USED ONLY AT LOCATIONS SPECIFIED ON OFFICE OF CHIEF ENGINEER, COMMUNICATIONS AND SIGNALS DRAWINGS AND IN GENERAL ORDER CONCERNING THE PLACING OF CIRCUITS IN SERVICE.

SIGNS 1801 - 1803

FACE OF SIGN TO BE PAINTED WHITE
BACK OF SIGN AND POST PAINTED WHITE

1 5/8" DIAMETER STIMSONITE CRYSTAL REFLECTORS TO BE MOUNTED ON FRONT AND BACK OF SIGN.

LETTERS TO BE 1 1/4" WIDE CONDENSED "OPEN TYPE LETTERS"

SIGNS 1802 - 1804

FACE OF SIGN TO BE PAINTED WHITE.

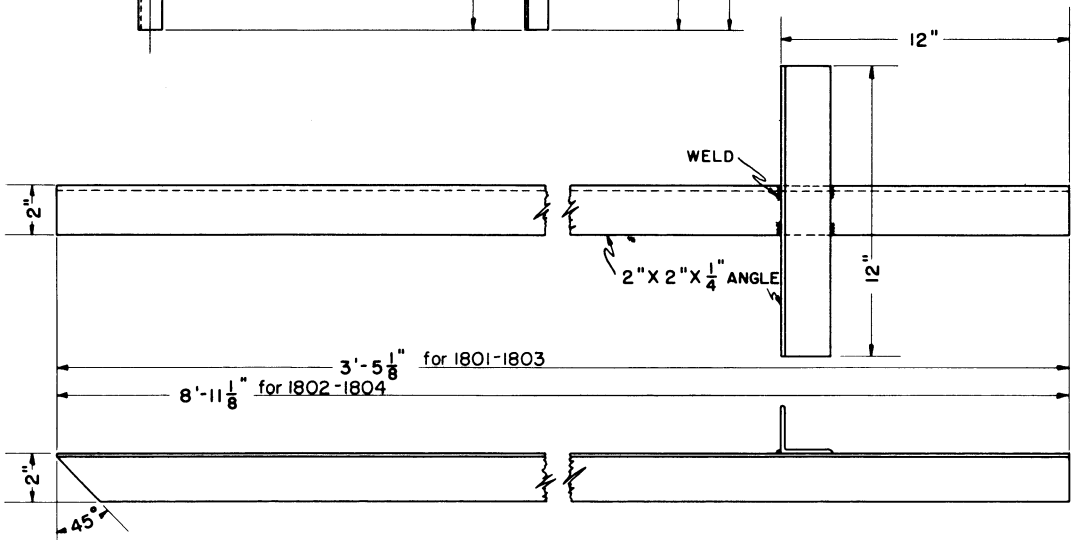
BACK OF SIGN AND POST PAINTED BLACK.

LETTERS TO BE 1 1/4" WIDE CONDENSED "OPEN TYPE LETTERS"

SIGN MOUNTED ON ENGINEMAN'S RIGHT 7'-2" FROM GAUGE OF RAIL.

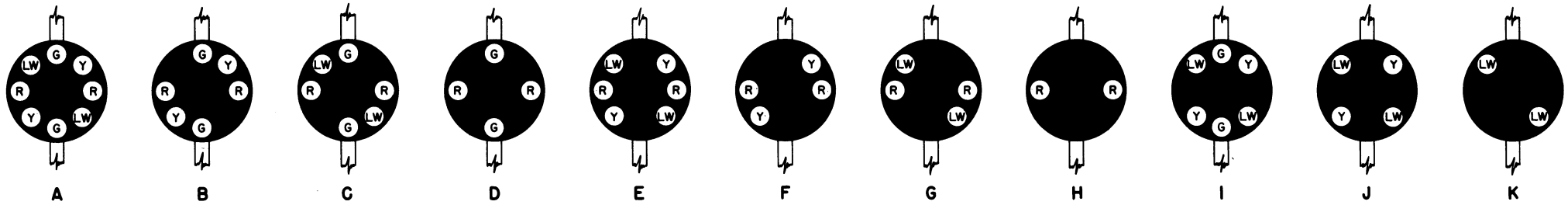
APPROVED: 
CHIEF ENGR. MAINTENANCE

APPROVED: 
CHIEF ENGR. COMM. & SIGS.

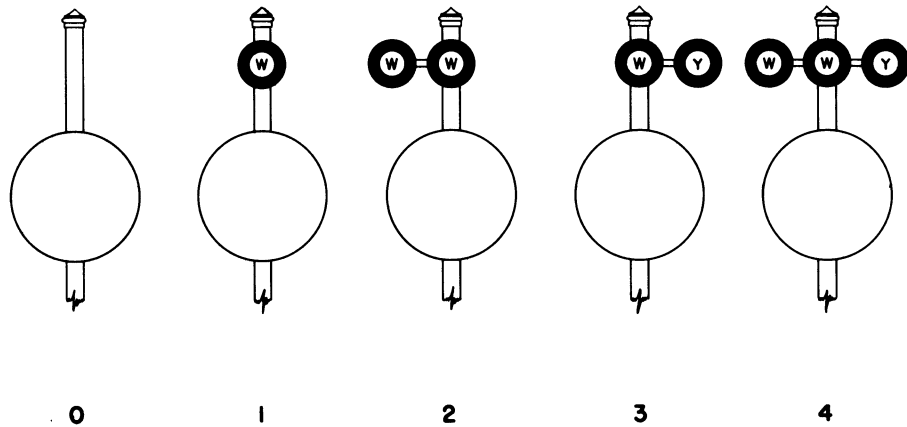


BALTIMORE & OHIO RAILROAD
**END OF TRACK CIRCUIT
AND CUT SECTION SIGNS**
OFFICE OF CHIEF ENGINEER COMM. & SIGNALS
BALTIMORE, MD.
MARCH 2, 1949

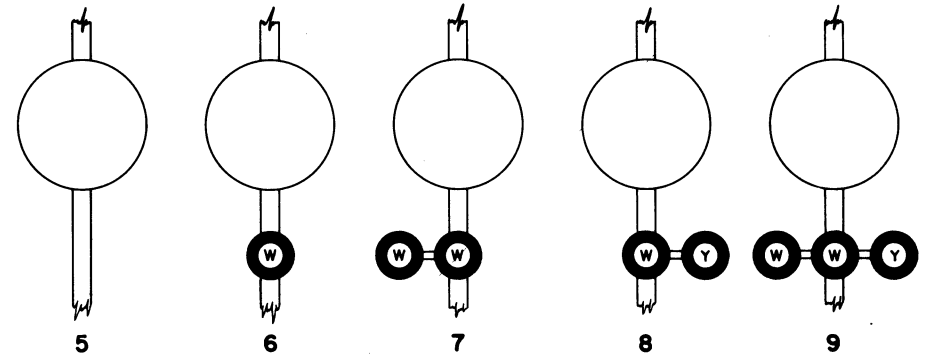
MAIN GROUP



TOP MARKER GROUP



BOTTOM MARKER GROUP



NOTES:

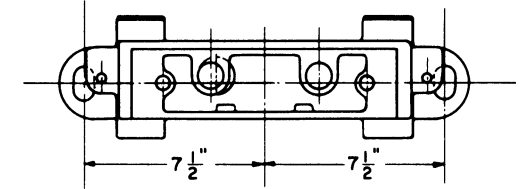
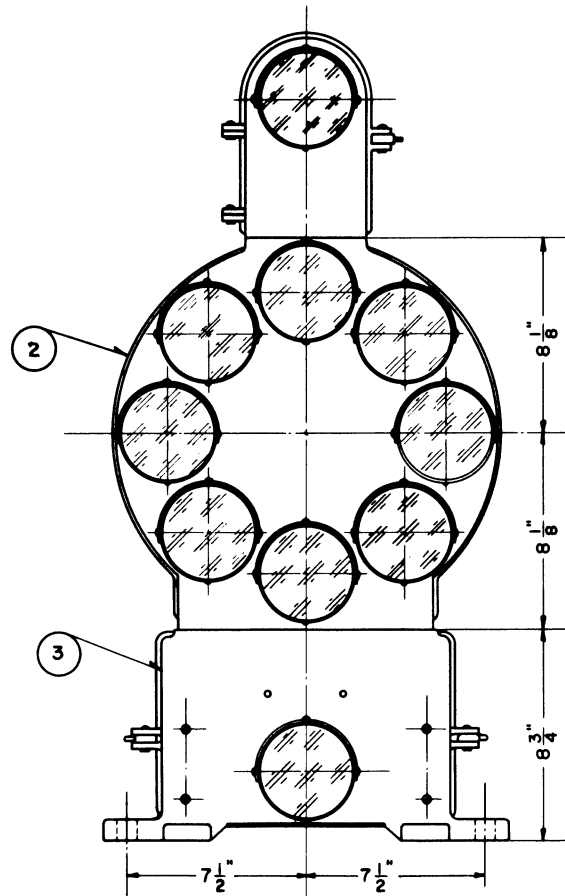
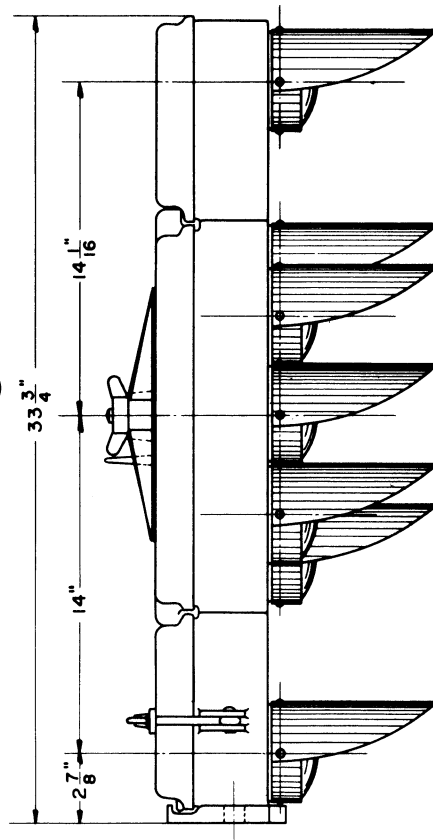
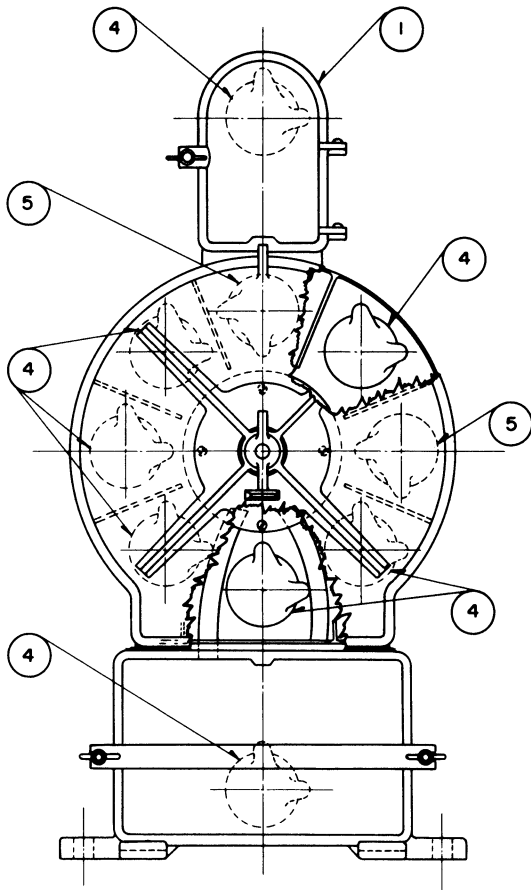
Signals shall conform to A.A.R. Signal Section Specification 162.
 Lamp units for high signals installed on tangent track shall have clear outer doublet lens with 40 degree deflecting bullseye.
 Lamp units for high signals installed on curved track shall have clear 30 degree outer doublet spreadlite lens with 40 degree flat deflecting roundel.
 Marker lamp unit with clear inner doublet lens shall be provided with copper wire screen. See Dwg. S-193-D, sh.1.
 Ordering reference for complete signal shall consist of three characters as follows:
 FIRST - Letter designating main group.
 SECOND - Figure designating top marker group.
 THIRD - Figure designating bottom marker group.

TYPICAL ORDERING REFERENCE

Dwarf signal:
 "___" Dwarf Color Position Light Signal assembly
 Fig. B-1-5", Dwg. S-185-B.
 High signal for tangent track:
 "___" High Color Position Light Signal assembly
 Fig. B-1-5", Dwg. S-185-B.
 High signal for curved track:
 "___" High Color Position Light Signal assembly
 with 30 degree spreadlite lens, Fig. B-1-5,
 Dwg. S-185-B.

Approved: *A. L. Jordan*
 Signal Engineer

BALTIMORE & OHIO RAILROAD
**ASSEMBLIES OF
 COLOR POSITION LIGHT SIGNALS**
 Office of Signal Engineer
 Baltimore, Md.
 Sept. 11, 1958.



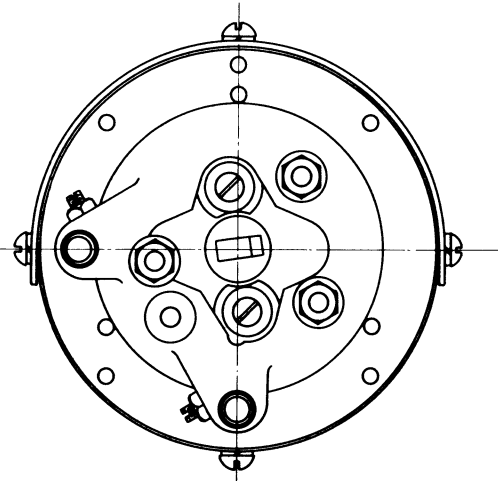
PLAN VIEW OF BASE

TYPE "VA" COLOR POSITION LIGHT DWARF SIGNAL ASSEMBLY - 1920
(Fig. A-1-6, Dwg. S-185-A shown)

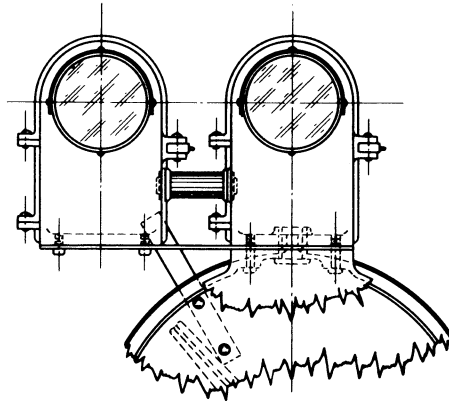
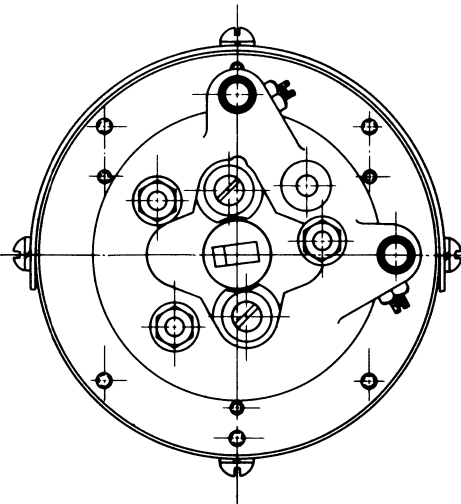
Approved: *A. S. Hunt*
Chief Engr. Comm. & Sigs.

BALTIMORE & OHIO RAILROAD
**TYPE "VA" COLOR POSITION LIGHT
DWARF SIGNAL**

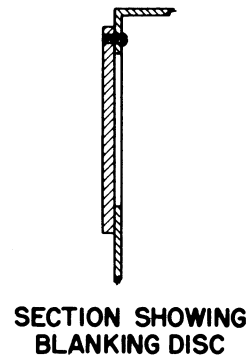
Office of Chief Engineer Comm. & Signals
Baltimore, Md.
May 22, 1953



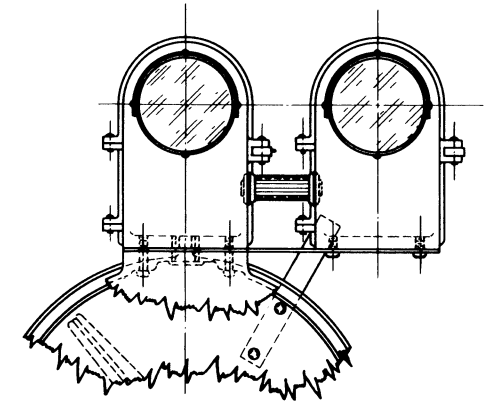
4" DOUBLET UNIT WITH FOCUS FINDER-1922
Hood & Roundel rotated 180°
Otherwise same as 1921.



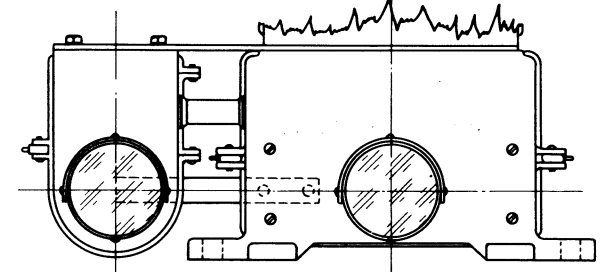
VIEW SHOWING METHOD OF ATTACHING
LEFT STAGGERED TOP MARKER



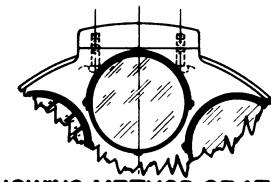
SECTION SHOWING
BLANKING DISC



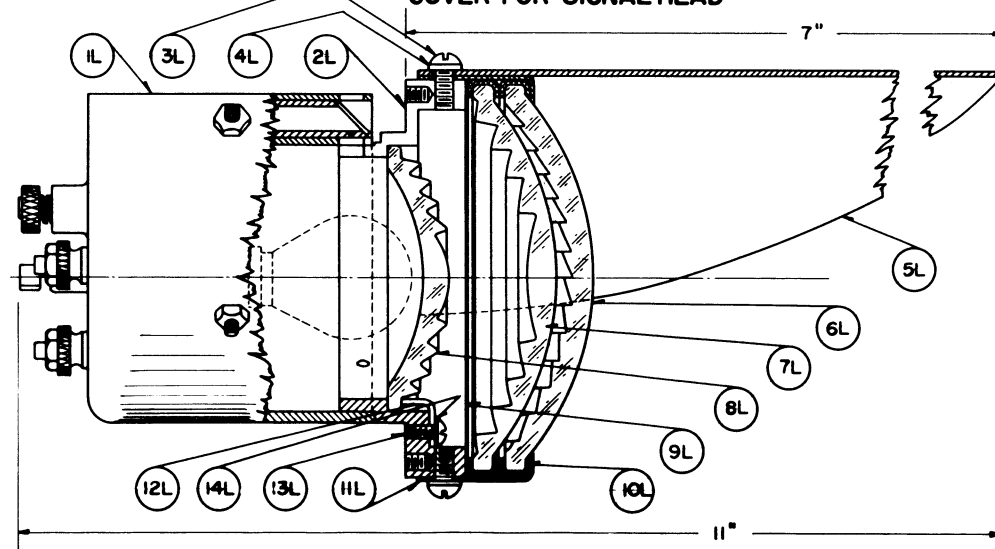
VIEW SHOWING METHOD OF ATTACHING
RIGHT STAGGERED TOP MARKER



VIEW SHOWING METHOD OF ATTACHING
LEFT STAGGERED BOTTOM MARKER



VIEW SHOWING METHOD OF ATTACHING
COVER FOR SIGNAL HEAD



4" DOUBLET UNIT WITH FOCUS FINDER-1921

Approved: *A. S. Hunt*
Chief Engr. Comm. & Sigs.

BALTIMORE & OHIO RAILROAD
**TYPE "VA" COLOR POSITION LIGHT
DWARF SIGNAL**

Office of Chief Engineer Comm. & Signals
Baltimore, Md.
May 22, 1953

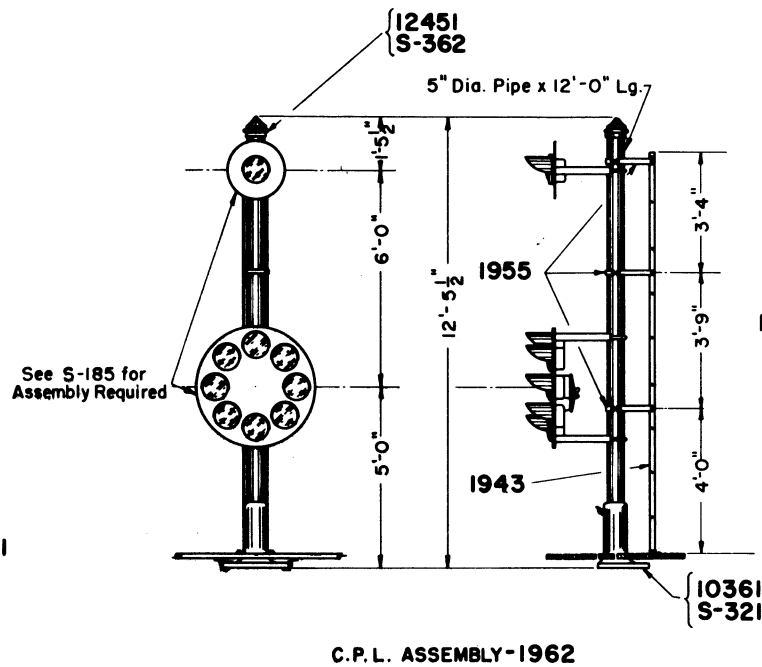
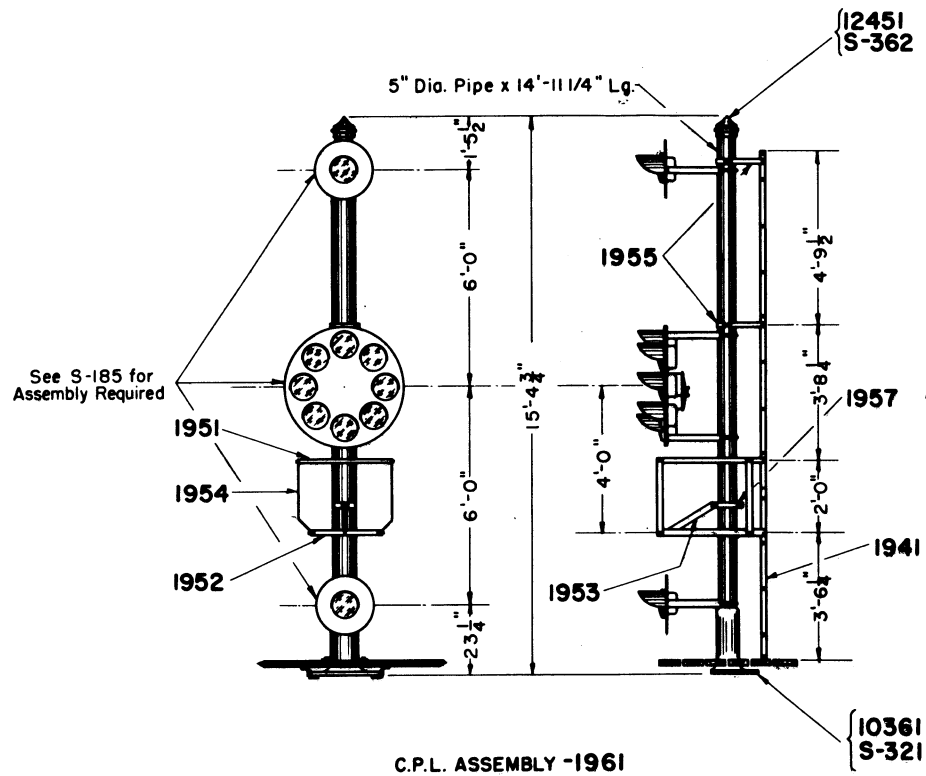
MATERIAL LIST FOR TYPE "VA" COLOR POSITION LIGHT SIGNAL ASSEMBLY					
Item	Req'd.	Name	M'fg.	Ref.	Dwg.No.
1	1	Type "VA" Marker Light Complete	G. R. S.		
2	1	Signal Head Complete	G. R. S.		
3	1	Case Complete	G. R. S.		
4	6	4" Doublet Unit with Focus Finder		1921	S-192, sh. 2.
5	2	4" Doublet Unit with Focus Finder		1922	S-192, sh. 2.

MATERIAL LIST FOR 4" DOUBLET LENS UNIT WITH FOCUS FINDER FOR C.P.L. DWARF SIGNAL-1921 or 1922					
Item	Req'd.	Name	M'fg.	Ref.	Dwg. No.
1L	1	Receptacle Unit Complete.	G. R. S.	56895 Gr.2	36762-34
2L	1	Ring, Bezel.	G. R. S.	43983-71	
3L	4	No. 10/32x3/8" Brass Rd. Hd. Mach. Screw with Nut.			
4L	4	No. 10 Spring Washer.			
5L	1	Hood.	G. R. S.	49127-51	
6L	1	Roundel.		Item 20	S-193-B, sh. 1.
7L	1	Lens (Outer Doublet).		Item 19	S-193-B, sh. 1.
8L	1	Lens (Inner Doublet).		Items 13 to 17	S-193-B, sh. 1.
9L	1	Disc (for Marker Lights only).	G. R. S.	48885-2	
10L	2	Gaskets.	G. R. S.	13014-188	
11L	1	Ring, Bezel.	G. R. S.	56904	
12L	3	Clip.	G. R. S.	53721-26	
13L	3	No. 6/32x1/4" Brass Rd. Hd. Mach. Screw with Nut.			
14L	3	No. 6 Shakeproof Washer.			

Approved: ASHX
Chief Engr. Comm. & Sigs.

BALTIMORE & OHIO RAILROAD
**TYPE "VA" COLOR POSITION LIGHT
 DWARF SIGNAL**

Office of Chief Engineer Comm. & Signals
 Baltimore, Md.
 May 22, 1953

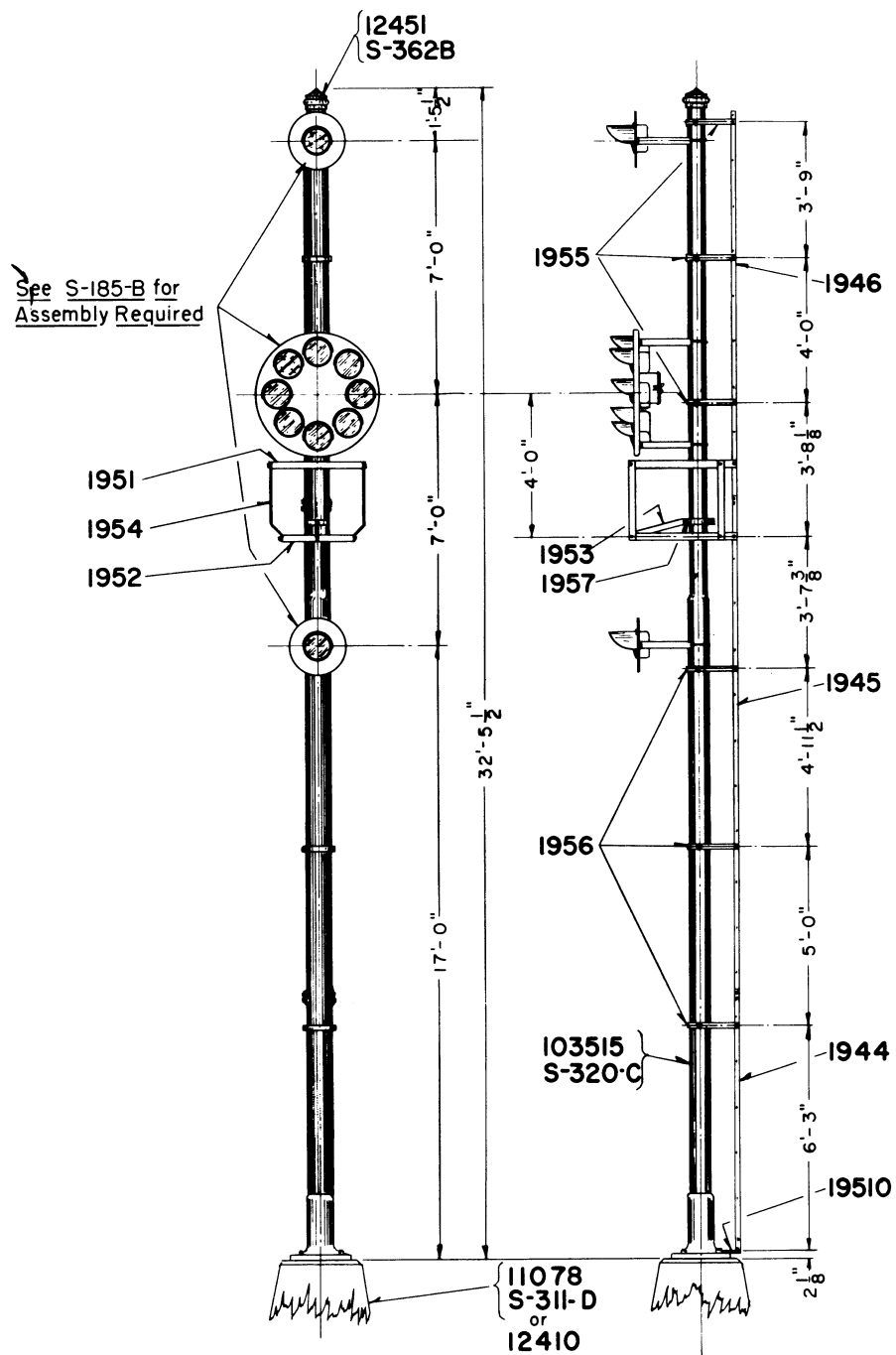


TYPICAL ORDERING REFERENCE
 " _____ Color Position Light High Signal complete
 No. 196_, Dwg. S-196, with assembly Fig. B-1-5, Dwg. S-185"
 " _____ Color Position Light High Signal complete
 No. 196_, Dwg. S-196, with assembly Fig. B-1-5 having
 30 degree spreadlife lens, Dwg. S-185.

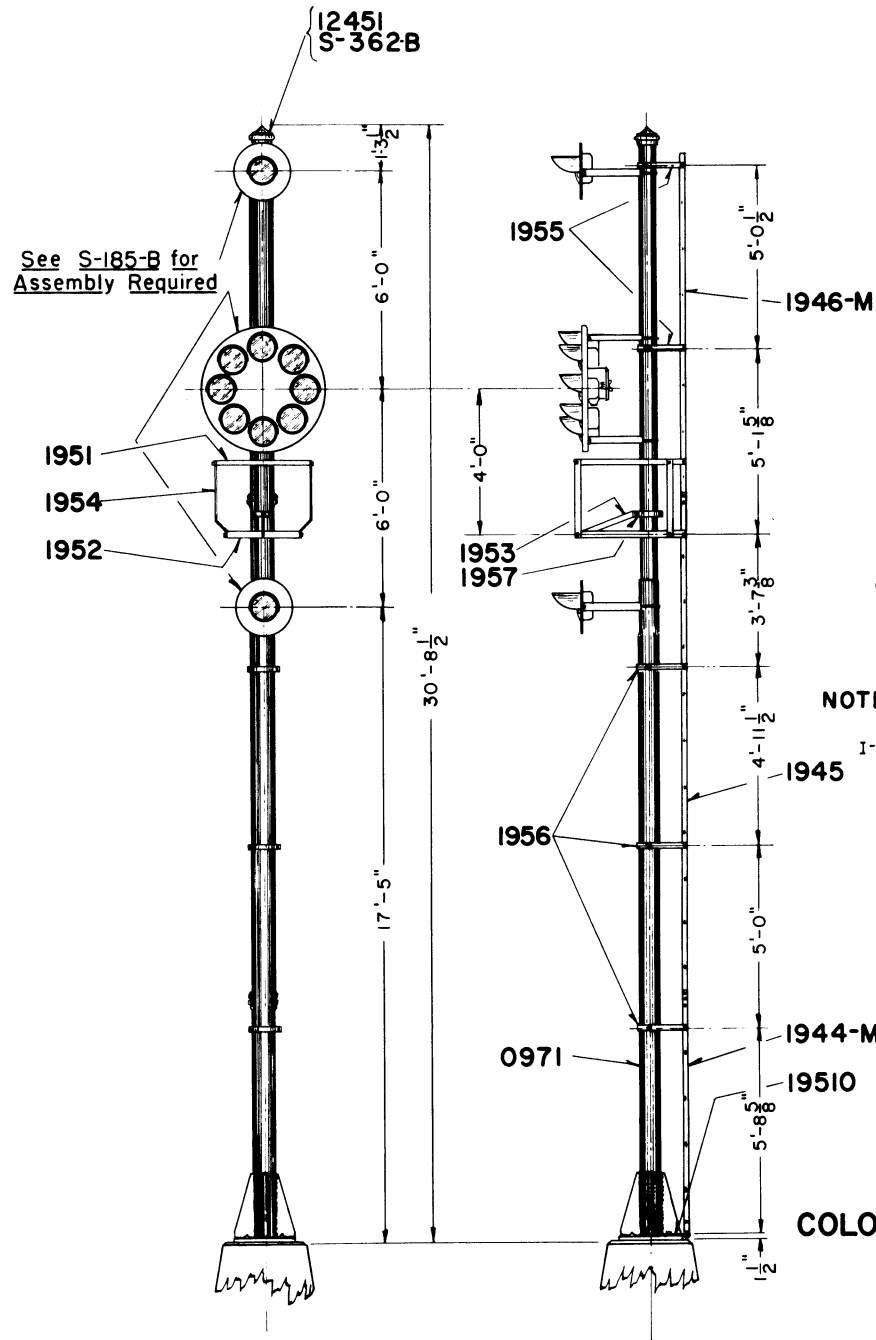
NOTES:
 Painting shall be in accordance with Instructions I-134.

Approved: _____
 Chief Eng'r. Comm. & Sigs.

BALTIMORE & OHIO RAILROAD
**COLOR POSITION LIGHT SIGNALS
 FOR BRACKET POST OR CANTILEVER**
 Office of Chief Engineer Comm. & Signals
 Baltimore, Md.
 Nov. 30, 1949.



C.P.L. ASSEMBLY -1971



C.P.L. ASSEMBLY -1971-M

TYPICAL ORDERING REFERENCE

- " _____ Color Position Light high signal complete No. 197-, Dwg. S-197-B, with assembly Fig. B-1-5, Dwg. S-185-B"
- " _____ Color Position Light high signal complete No. 197-, Dwg. S-197-B, with assembly Fig. B-1-5 having 30 degree spreadlite lens, Dwg. S-185-B.

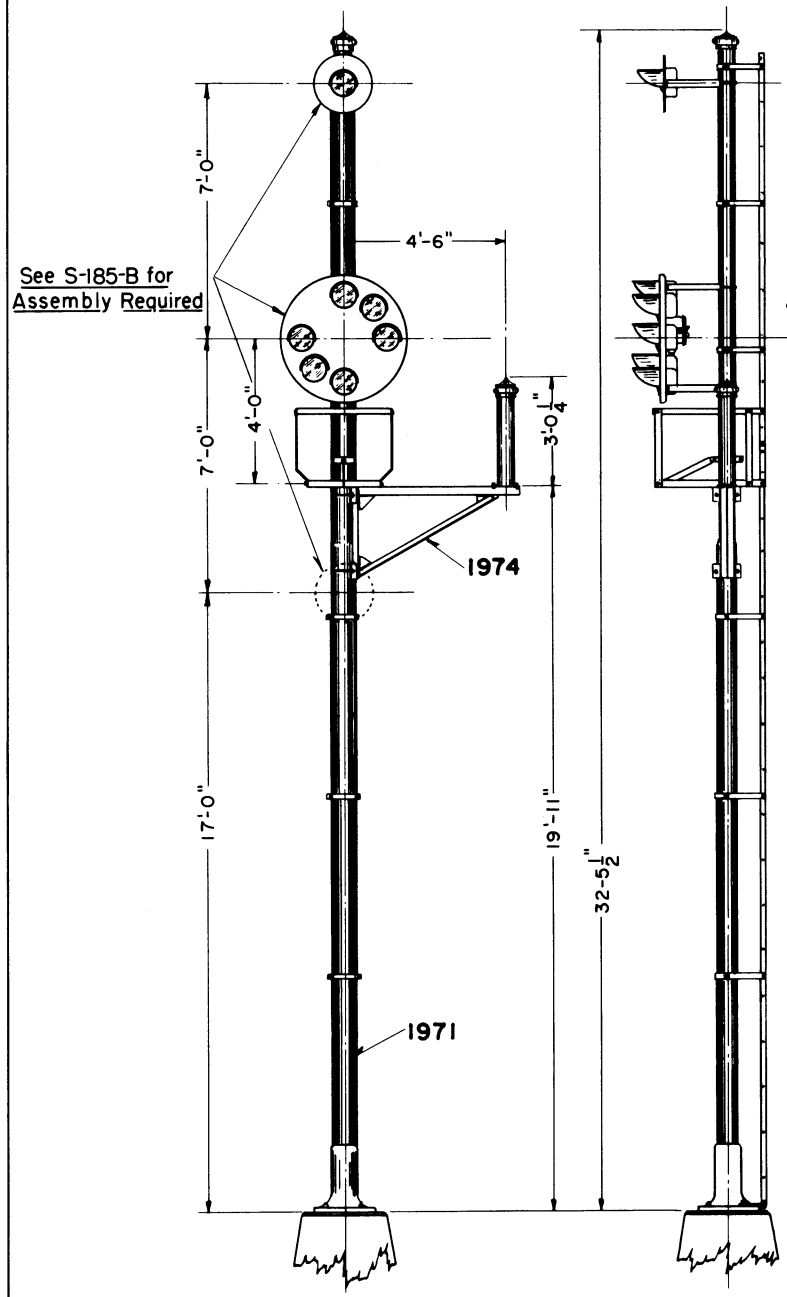
NOTES:

Painting shall be in accordance with current instructions I-134.

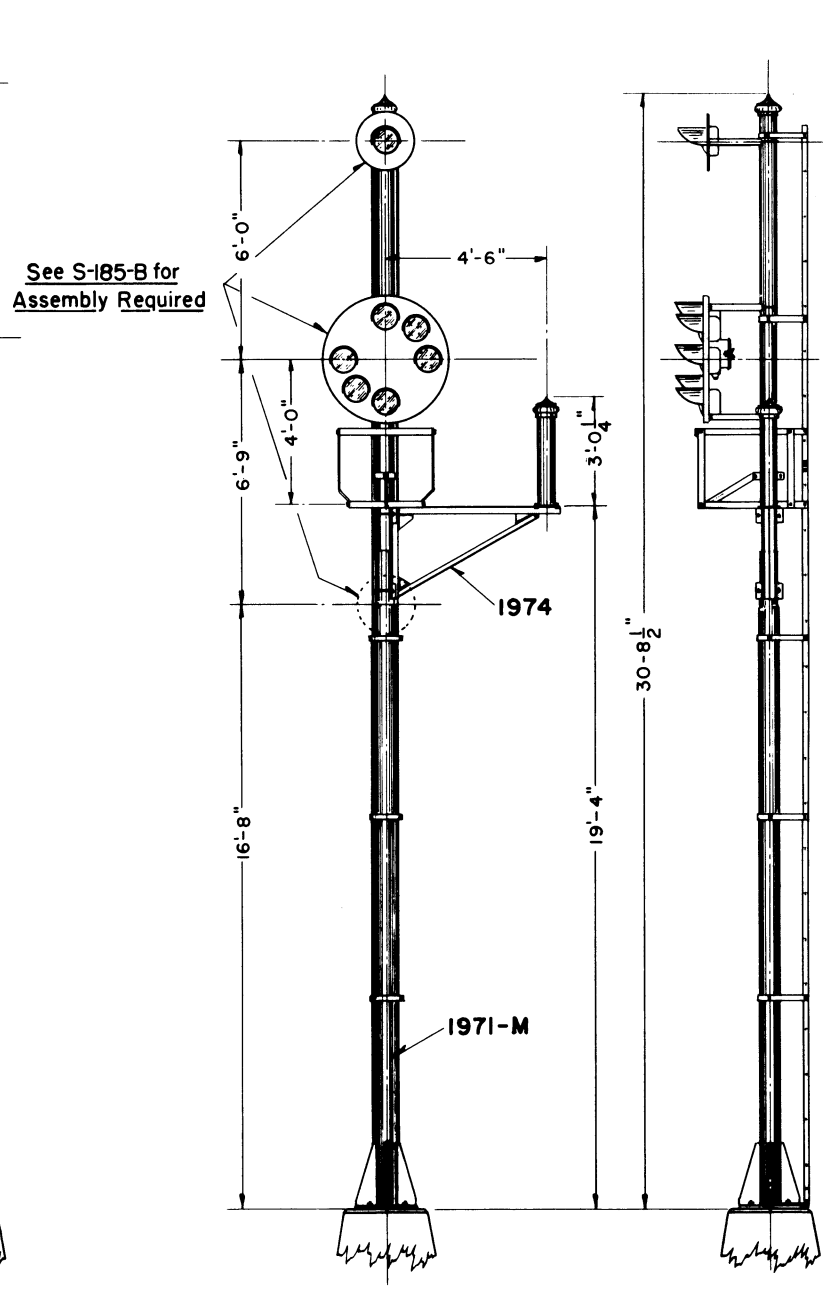
Approved: *A. L. Jordan*
Signal Engineer

**BALTIMORE & OHIO RAILROAD
COLOR POSITION LIGHT GROUND SIGNALS**

Office of Signal Engineer
Baltimore, Md.
March 1, 1962



C. P. L. ASSEMBLY WITH
CANTILEVER BRACKET -1971-BR



C. P. L. ASSEMBLY WITH
CANTILEVER BRACKET -1971-MBR

TYPICAL ORDERING REFERENCE

"_____ Color Position Light high signal complete
No. 197_, Dwg. S-197-D, with assembly Fig. B-1-5, Dwg. S-185-B"

"_____ Color Position Light high signal complete
No. 197_, Dwg. S-197-D, with assembly Fig. B-1-5 having
30 degree spread lite lens, Dwg. S-185-B.

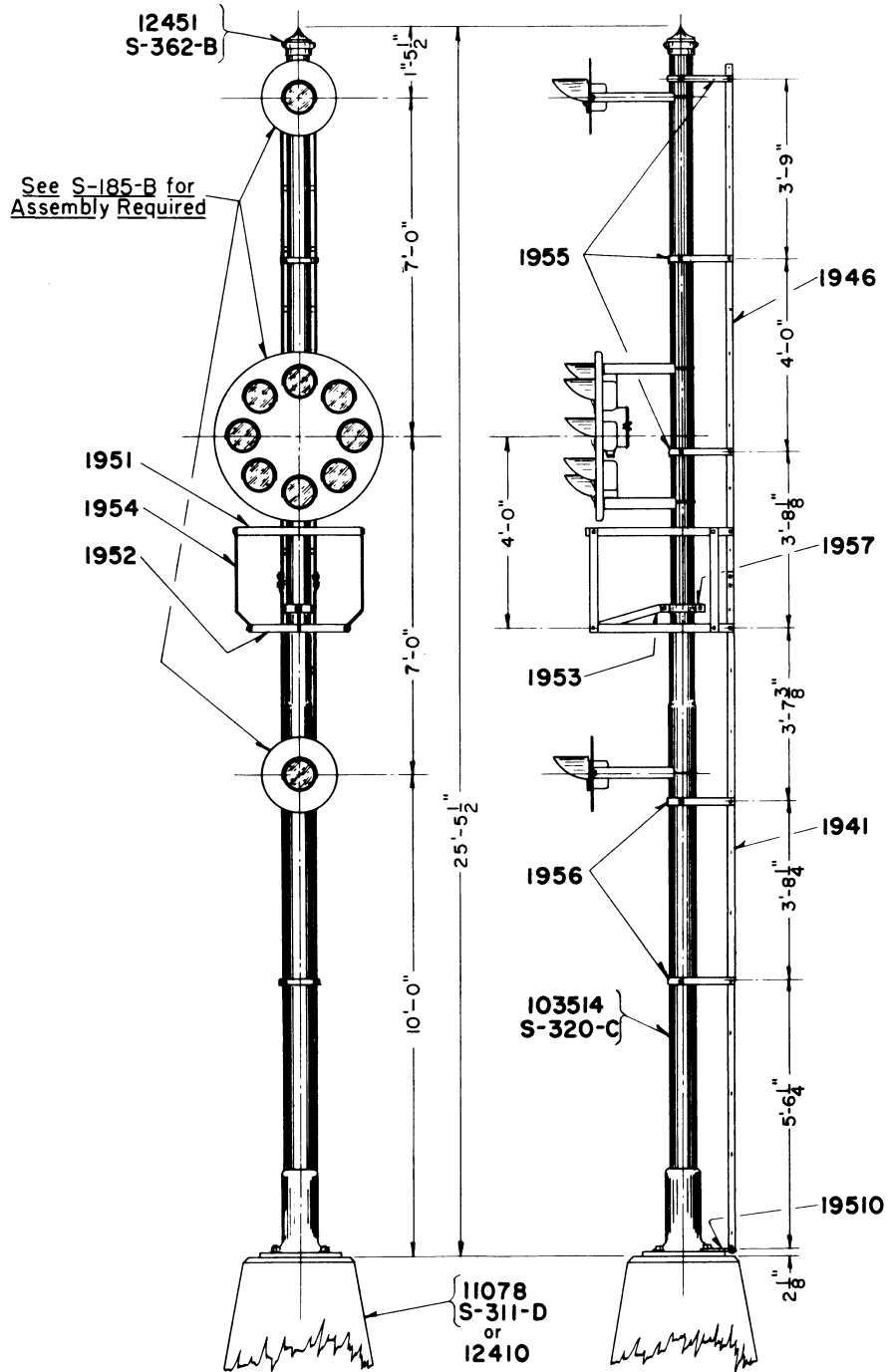
NOTES:

Painting shall be in accordance with current instructions
I-134.

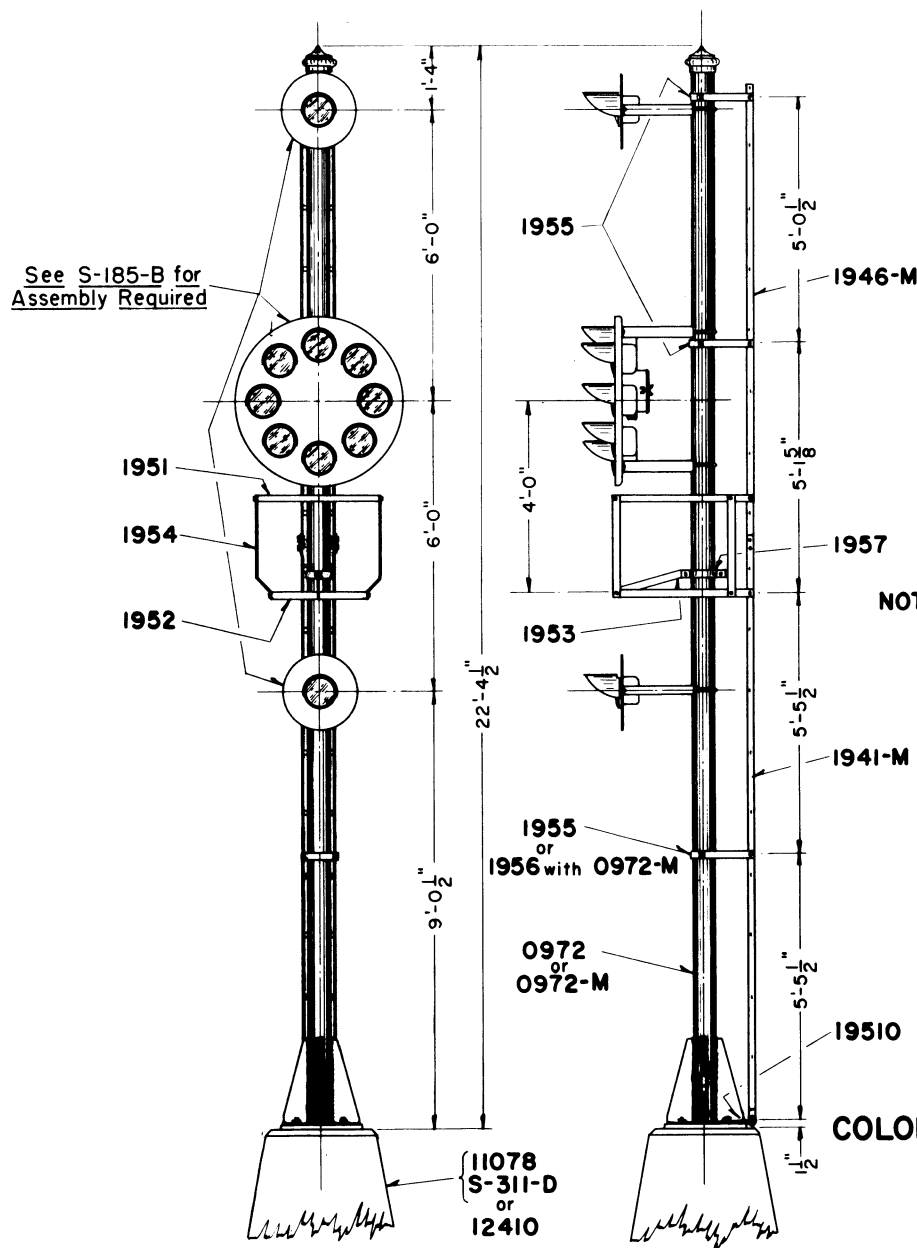
Approved: *A. L. Jordan*
Signal Engineer

BALTIMORE & OHIO RAILROAD
COLOR POSITION LIGHT GROUND SIGNALS

Office of Signal Engineer
Baltimore, Md.
March 1, 1962



C.P.L. ASSEMBLY - 1972



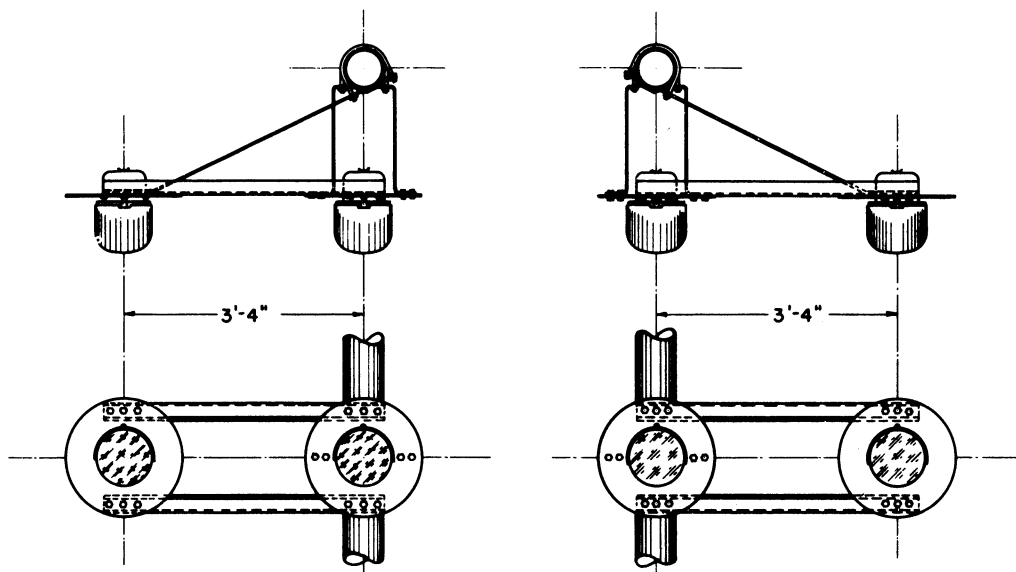
C.P.L. ASSEMBLY - 1972-M

TYPICAL ORDERING REFERENCE
 " _____ Color Position Light high signal complete
 No.197_, Dwg. S-197-D, with assembly Fig. B-1-5, Dwg. S-185-B.
 " _____ Color Position Light high signal complete
 No.197_, Dwg. S-197-D, with assembly Fig. B-1-5 having
 30 degree spreadlite lens, Dwg. S-185-B.

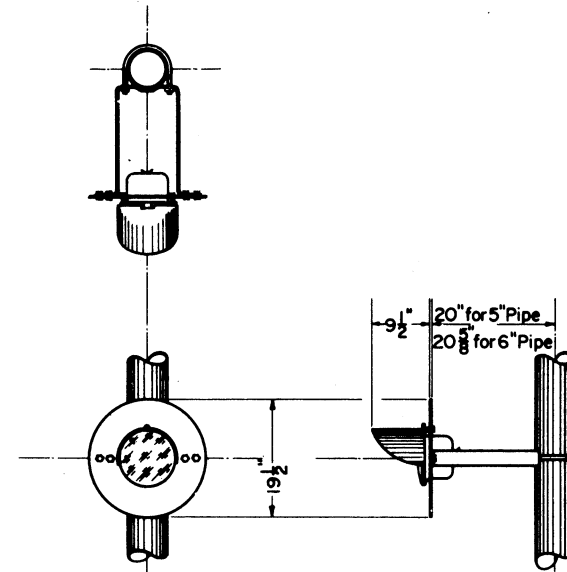
NOTES:
 Painting shall be in accordance with current instructions
 I-134.

Approved: *A. L. Jordan*
 Signal Engineer

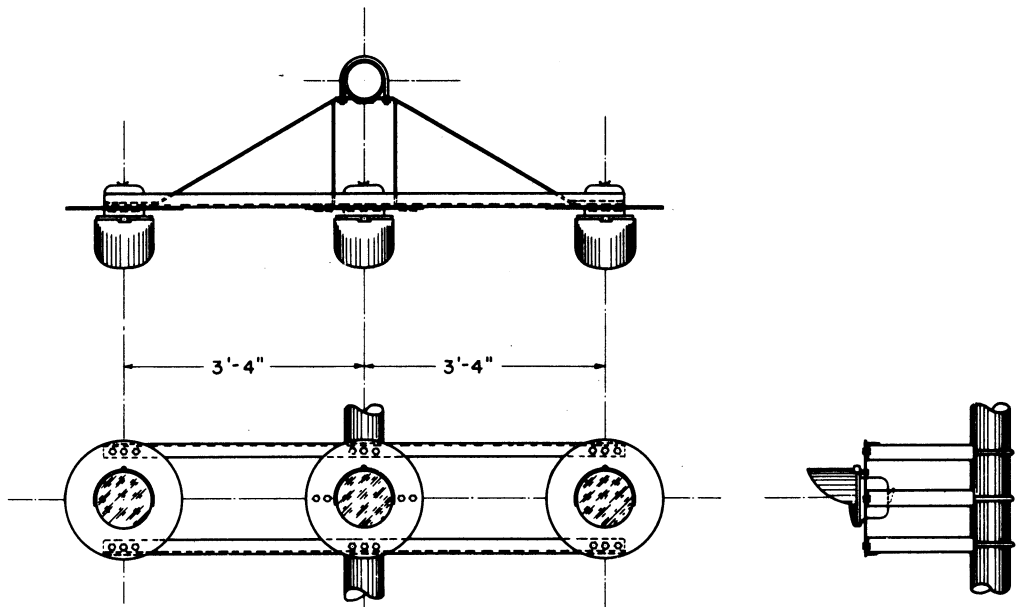
BALTIMORE & OHIO RAILROAD
COLOR POSITION LIGHT GROUND SIGNALS
 Office of Signal Engineer
 Baltimore, Md.
 March 1, 1962



SKETCH SHOWING APPLICATION OF TWO MARKERS
(Top or Bottom)



SKETCH SHOWING APPLICATION OF SINGLE MARKER
(Top or Bottom)



SKETCH SHOWING APPLICATION OF THREE MARKERS
(Top or Bottom)

Approved: *A. Adams*
Chief Eng'r. Comm. & Sigs.

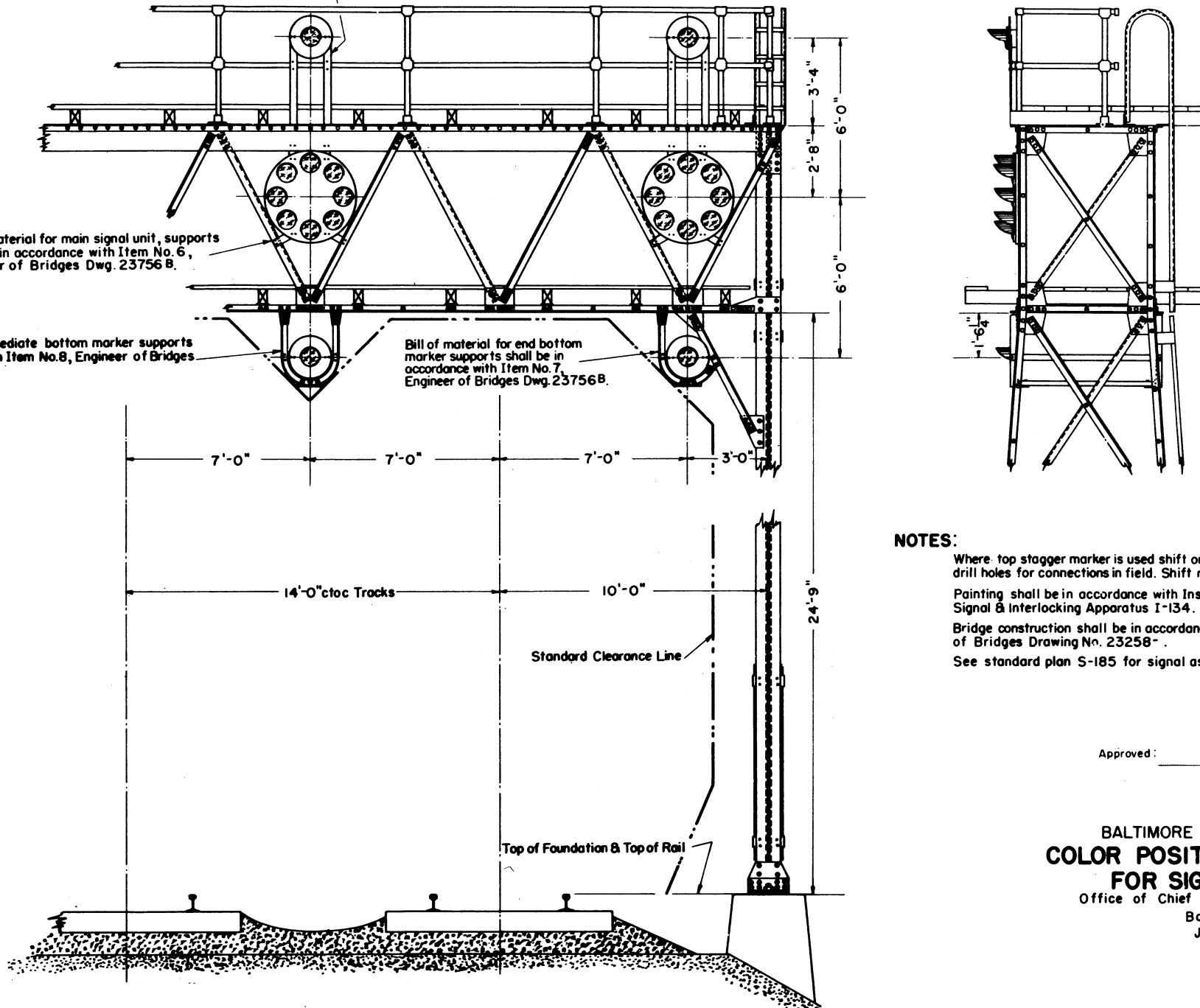
BALTIMORE & OHIO RAILROAD
**MARKER LIGHTS FOR
COLOR POSITION LIGHT SIGNALS**
Office of Chief Engineer Comm. & Signals
Baltimore, Md.
Nov. 30, 1949

Bill of material for top marker supports shall be in accordance with Item No.5, Engineer of Bridges Dwg. 23756 B.

Bill of material for main signal unit, supports shall be in accordance with Item No.6, Engineer of Bridges Dwg. 23756 B.

Bill of material for intermediate bottom marker supports shall be in accordance with Item No.8, Engineer of Bridges Dwg. 23756 B.

Bill of material for end bottom marker supports shall be in accordance with Item No.7, Engineer of Bridges Dwg. 23756 B.



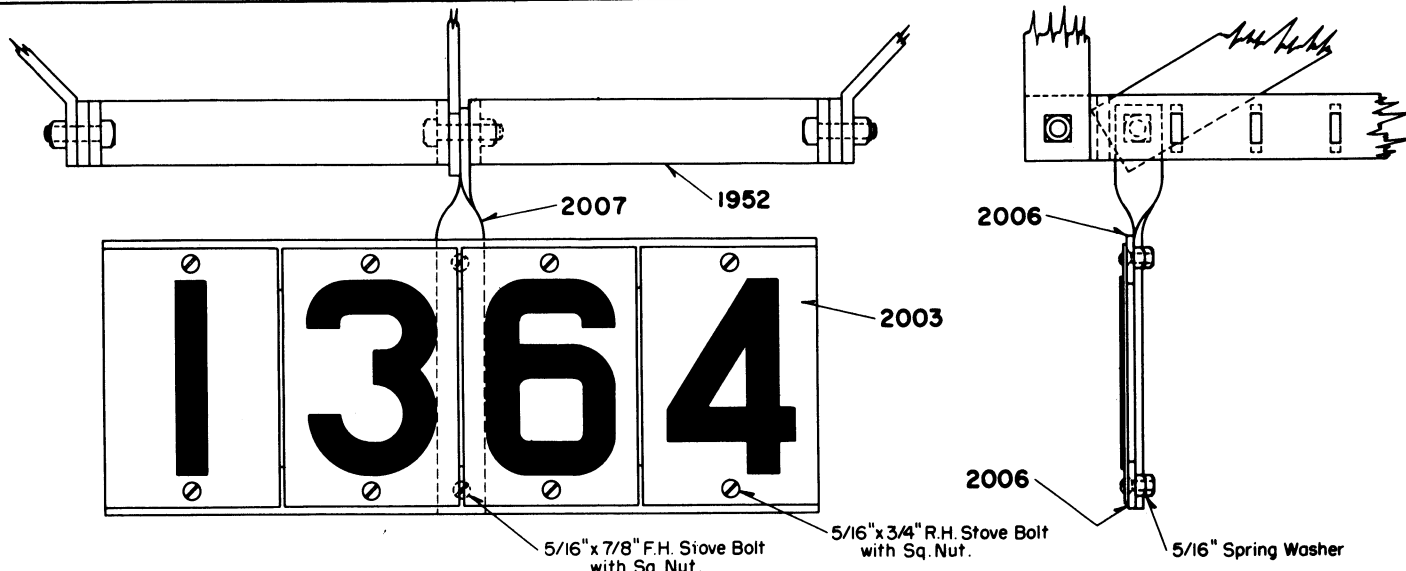
NOTES:

- Where top stagger marker is used shift one support as necessary and drill holes for connections in field. Shift railing post as necessary.
- Painting shall be in accordance with Instructions for Painting Signal & Interlocking Apparatus I-134.
- Bridge construction shall be in accordance with Office of Engineer of Bridges Drawing No. 23258.
- See standard plan S-185 for signal assemblies required.

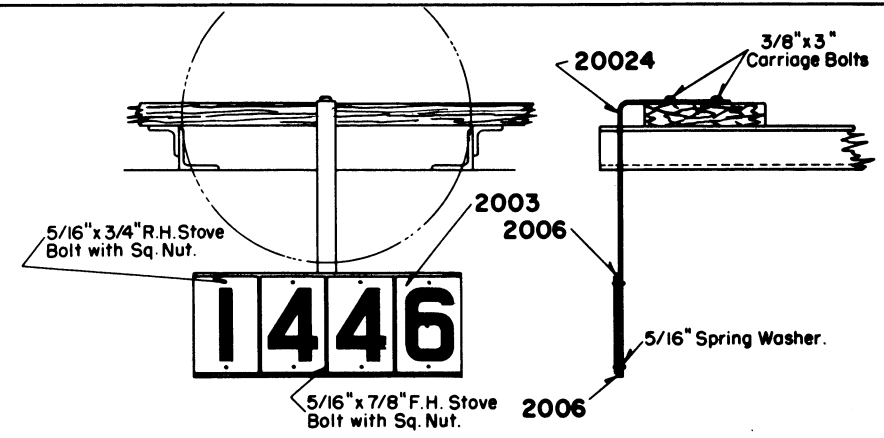
Approved: _____
Chief Eng'r. Comm. & Sigs.

BALTIMORE & OHIO RAILROAD
**COLOR POSITION LIGHT SIGNALS
FOR SIGNAL BRIDGES**

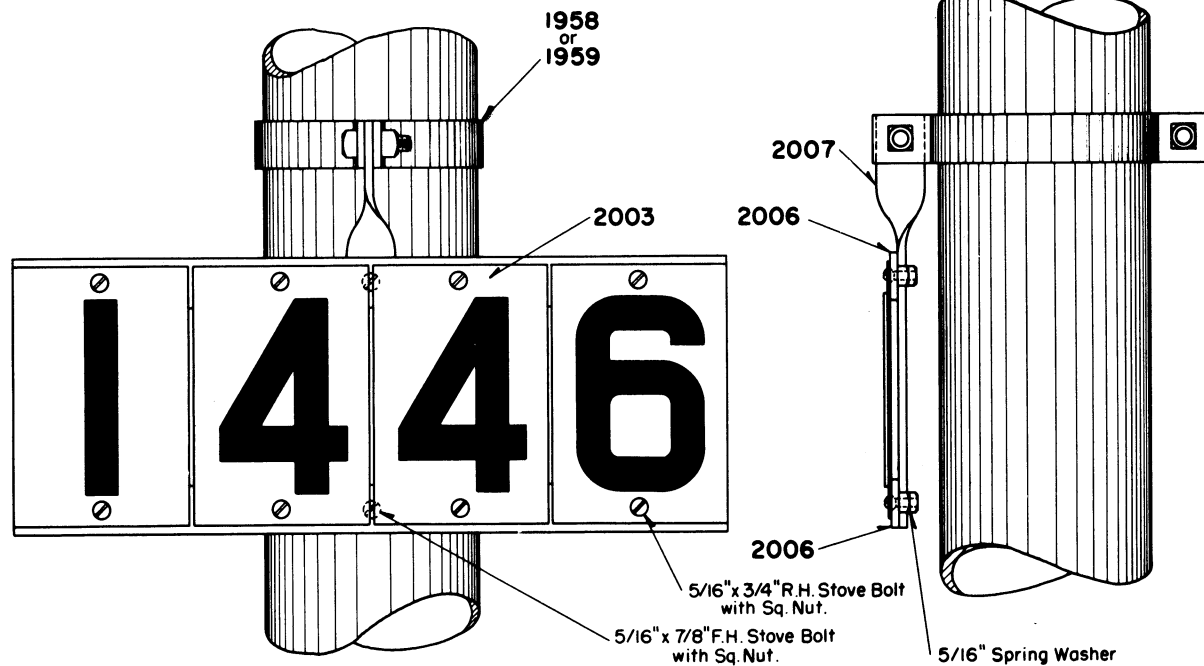
Office of Chief Engineer Comm. & Signals
Baltimore, Md.
Jan. 4, 1950



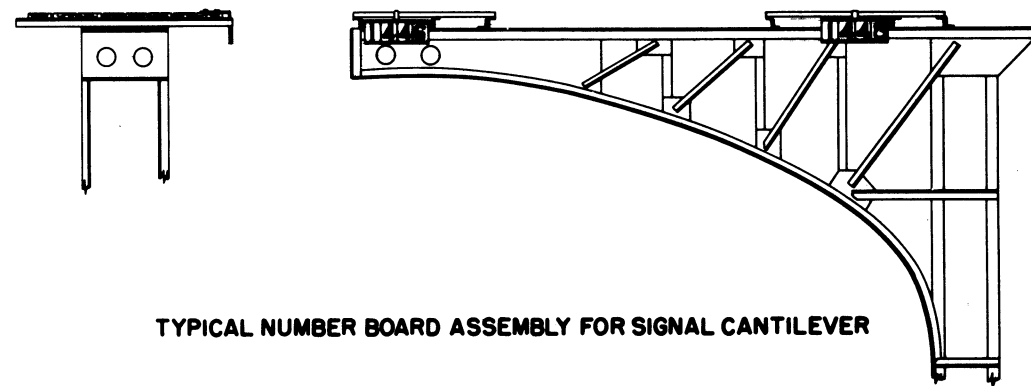
TYPICAL NUMBER BOARD ASSEMBLY FOR C.P.L. SIGNAL
(NO. 20010 SHOWN)



ENLARGED VIEW SHOWING
APPLICATION WHEN PERMISSIVE MARKER IS USED
(NO. 20022 SHOWN)



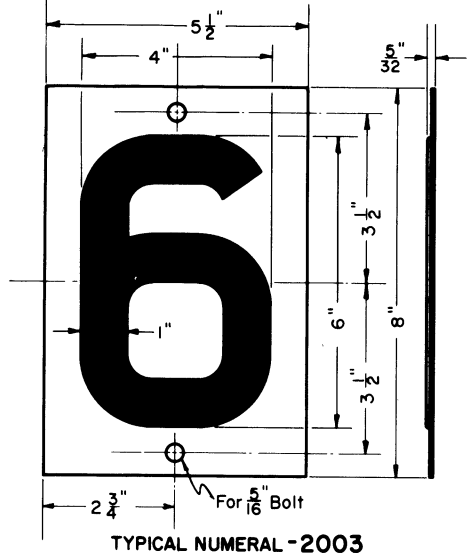
TYPICAL NUMBER BOARD ASSEMBLY FOR SEMAPHORE SIGNALS



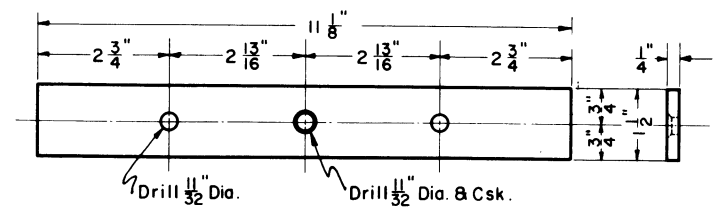
TYPICAL NUMBER BOARD ASSEMBLY FOR SIGNAL CANTILEVER

Approved: *A. S. Huer*
Chief Engr. Comm. & Sigs.

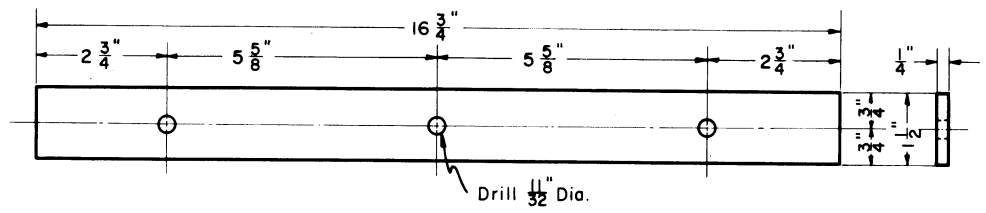
BALTIMORE & OHIO RAILROAD
SIGNAL NUMBER BOARDS
Office of Chief Engineer Comm. & Signals
Baltimore, Md.
March 1, 1951.



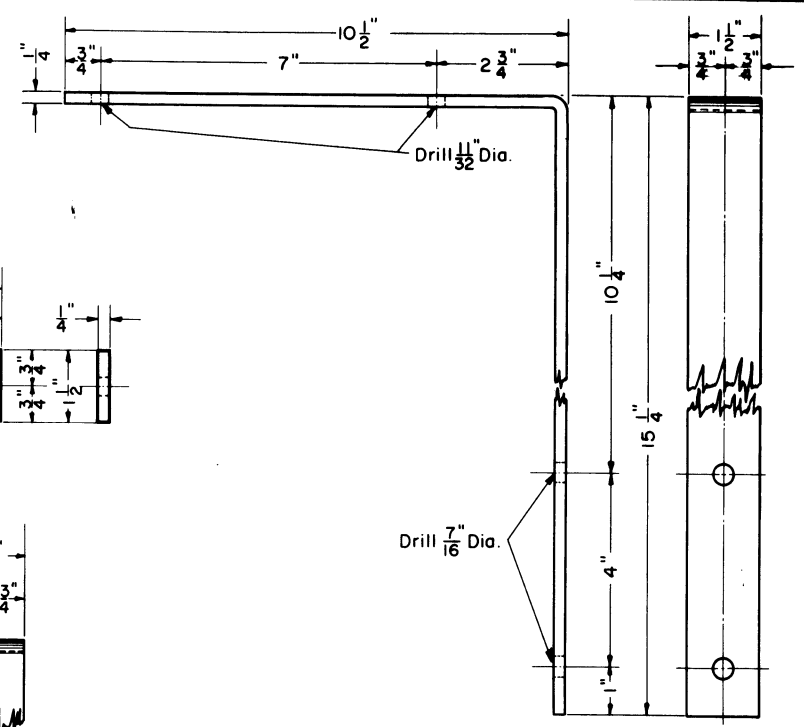
TYPICAL NUMERAL -2003



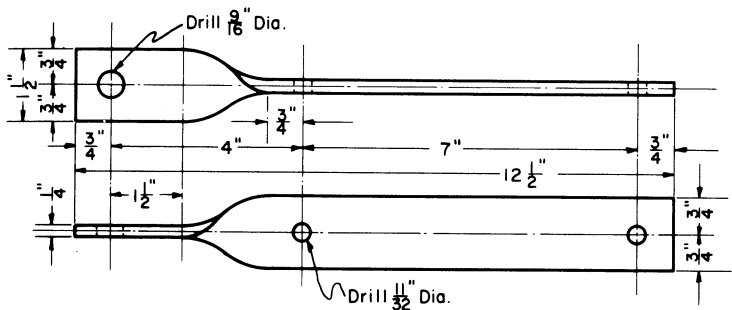
HORIZONTAL SUPPORT FOR 2 NUMBERS -2004



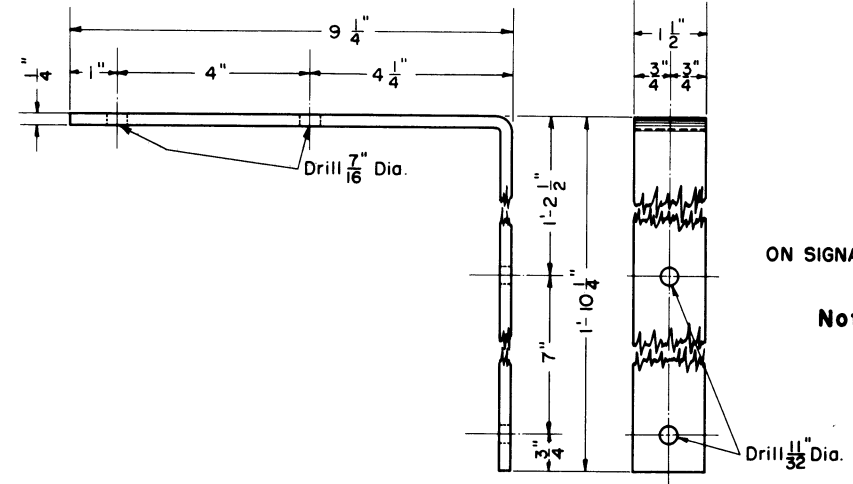
HORIZONTAL SUPPORT FOR 3 NUMBERS -2005



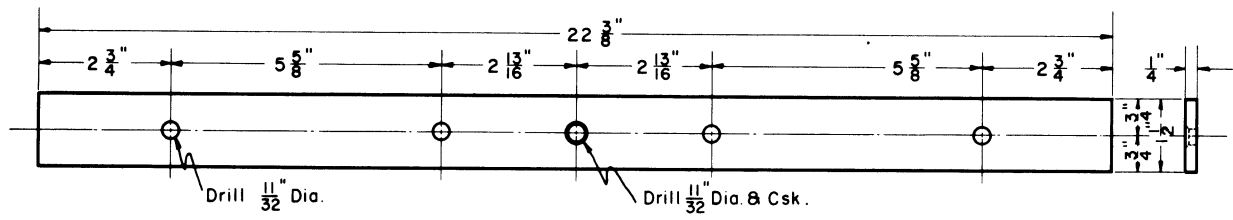
VERTICAL SUPPORT FOR HORIZONTAL NUMBERS ON SIGNAL BRIDGE-BRACKET POST-CANTILEVER SIGNALS -20023



VERTICAL SUPPORT FOR HORIZONTAL NUMBERS -2007



VERTICAL SUPPORT FOR HORIZONTAL NUMBERS ON CANTILEVER AND BRACKET SIGNALS WHERE PERMISSIVE MARKER IS USED -20024



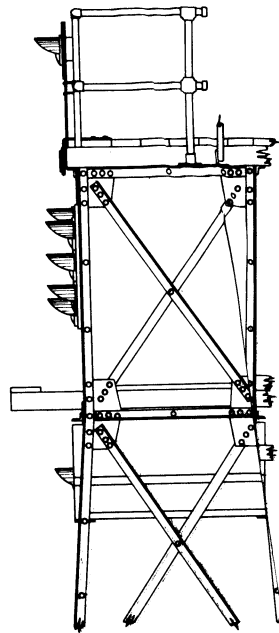
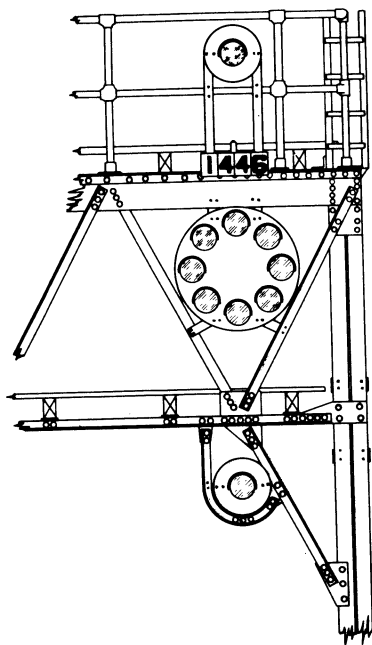
HORIZONTAL SUPPORT FOR 4 NUMBERS -2006

Note:

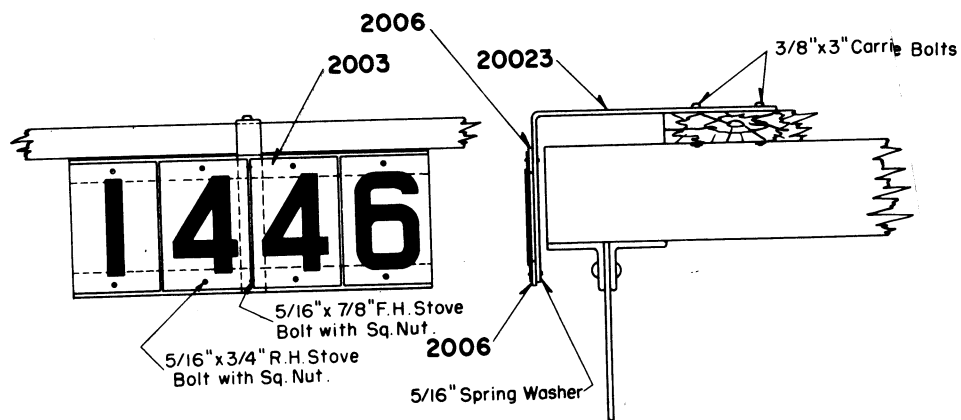
Numerals to be No. 16 ga. O.H. Steel pressed up and enameled with 3 coats of Vitreous Enamel.
 Numerals to be white on black background.
 Supports to be C-1020 steel.

Approved: *Asst. Chief Eng'r.*
 Chief Eng'r. Comm. & Sigs.

BALTIMORE & OHIO RAILROAD
SIGNAL NUMBER BOARDS
 Office of Chief Engineer Comm. & Signals
 Baltimore, Md.
 Feb. 1, 1950



TYPICAL NUMBER BOARD ASSEMBLY FOR SIGNAL BRIDGES



ENLARGED VIEW SHOWING APPLICATION TO SIGNAL BRIDGE (NO. 20019 SHOWN)

PIECE NUMBER	NUMBER BOARD ASSEMBLIES														
	FOR C.P.L. SIGNALS			FOR SEMAPHORE SIGNALS						FOR SIGNAL BRIDGE BRACKET POST CANTILEVER SIGNALS			FOR BRACKET POST CANTILEVER SIGNAL Where Permissive Marker is used.		
				FOR 5" I.D. MAST			FOR 6" I.D. MAST								
	No. 2008 2 Numbers	No. 2009 3 Numbers	No. 20010 4 Numbers	No. 20011 2 Numbers	No. 20012 3 Numbers	No. 20013 4 Numbers	No. 20014 2 Numbers	No. 20015 3 Numbers	No. 20016 4 Numbers	No. 20017 2 Numbers	No. 20018 3 Numbers	No. 20019 4 Numbers	No. 20020 2 Numbers	No. 20021 3 Numbers	No. 20022 4 Numbers
2003	2	3	4	2	3	4	2	3	4	2	3	4	2	3	4
2004	2			2			2			2			2		
2005		2			2			2			2			2	
2006			2			2		2			2			2	
2007	1	1	1	1	1	1	1	1	1	1	1	1	1	1	1
1958				1	1	1									
1959							1	1	1						
20023										1	1	1			
20024													1	1	1
5/16" x 3/4" R.H. Stove Bolt with Sq. Nut.	4	4	8	4	4	8	4	4	8	4	4	8	4	4	8
5/16" x 1" R.H. Stove Bolt with Sq. Nut.		2			2			2			2			2	
5/16" x 7/8" F.H. Stove Bolt with Sq. Nut.	2		2	2		2	2		2	2		2	2		2
5/16" Spring Washer	2	2	2	2	2	2	2	2	2	2	2	2	2	2	2
3/8" x 3" * Carriage Bolt										2	2	2	2	2	2


* - Omit for Bracket Post use 3/8" x 1-1/4" Sq. Hd. Machine Bolt with Hex. Nut and 2 Cut Washers.

Typical ordering reference:

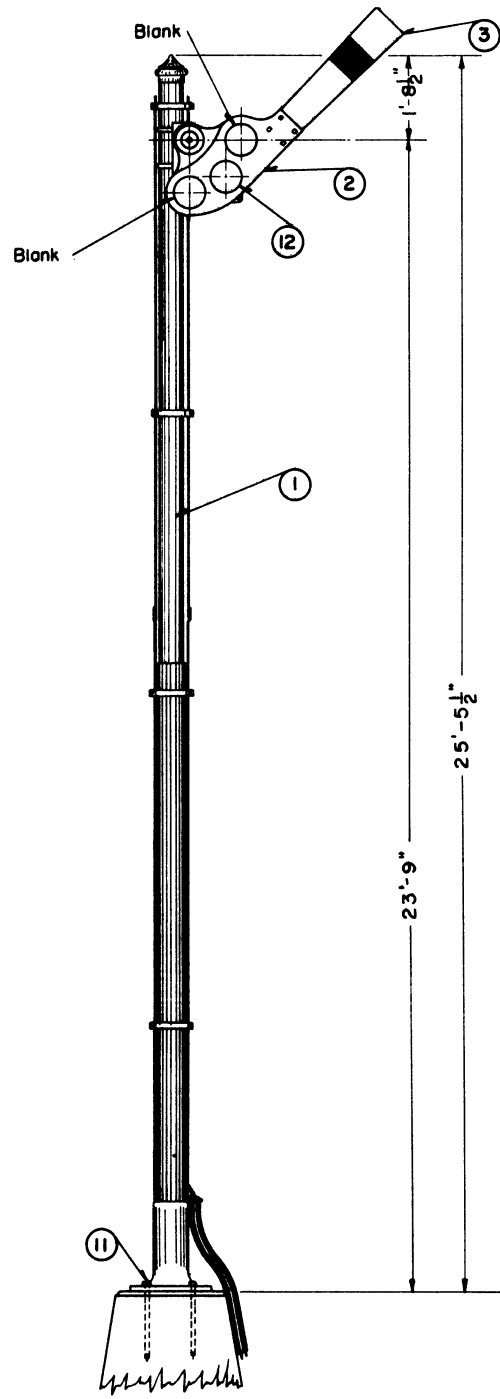
" _____ No. 2009 signal number board assembly complete having number "324", Dwg. S-200."

NOTES:

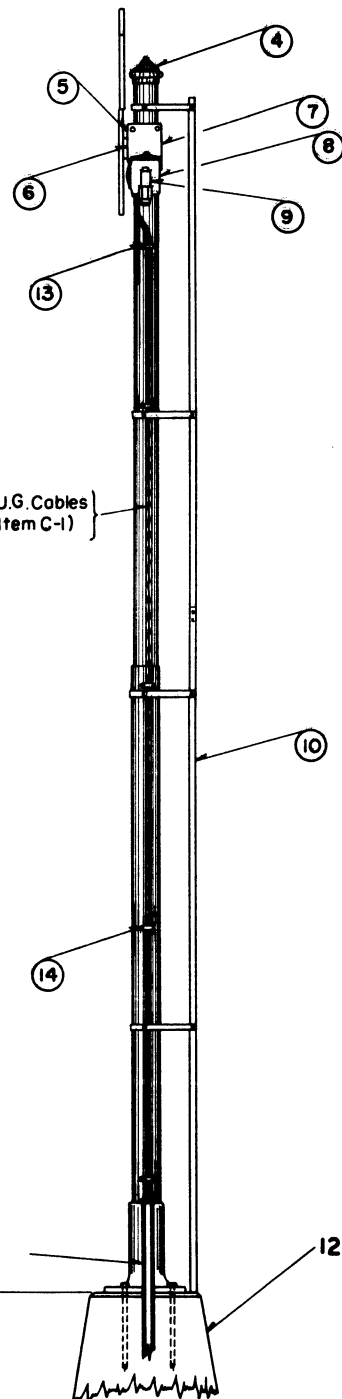
- Bolts, Nuts, and washers shall be cadmium plated.
- Number boards shall be manufactured and assembled in Zanesville Signal Shop.

Approved: 
Chief Engr. Comm. & Sigs.

BALTIMORE & OHIO RAILROAD
SIGNAL NUMBER BOARDS
Office of Chief Engineer Comm. & Signals
Baltimore, Md.
March 1, 1951.



2-1/4" #9 U.G. Cables
I-100-F (Item C-1)



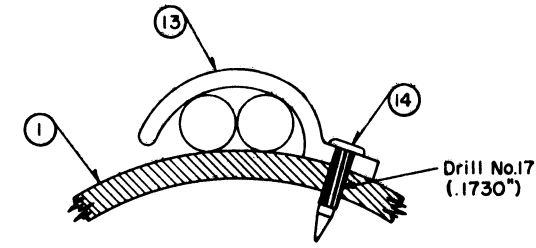
MATERIAL LIST FOR FIXED APPROACH SIGNAL				
ITEM	NUMBER	REQ'D	NAME	DRAWING
1	103514	1	25'-2" Ground Mast Assembly 10358 with Base 16143.	S-320
2	10401	1	Mechanical Semaphore Spectacle complete with stops but without Roundels, or Stud.	S-322-C
3	2373	1	Enameled Steel Signal Blade	S-237
4	12451	1	5" Short Pinnacle	S-362
5	10911	1	Filler Block	S-348
6	10901	1	Filler Block	S-347
7	119413	1	Assembly of Mech. Semaphore Bearing (with "U" Bolt 10831 only)	S-357
8	14463	1	Electric Light Unit Complete with 5-3/8" Clear Convex Roundel.	S-393-C
9	10494	1	Adjustable Lamp Bracket R.H.	S-323-B
10	135710	1	Ladder Assembly complete	S-374
11	11079	4	1"-8 x 36" Anchor Bolt with Hex. Nut & Plate Washer	S-311
12	49	1	8-3/8" Lunar White Convex Roundel	S-193-C, 2
13	4179	5	T&B One-Hole Pipe Strap 104 Gry'br. Cat.	Pg. 173
14		5	5/32" Parker-Kalon Masonary Nails L.A. Benson Cat. E	Pg. 688

NOTES:

When Commercial Power is available use Electric Lamp shown as Item 1, Signal Standard Plan S-113-C.

When Commercial Power is not available use Edison Carbonaire Battery 2-S-J-1 or equal, with Electric Lamp shown as Item 7, Signal Standard Plan S-113-C.

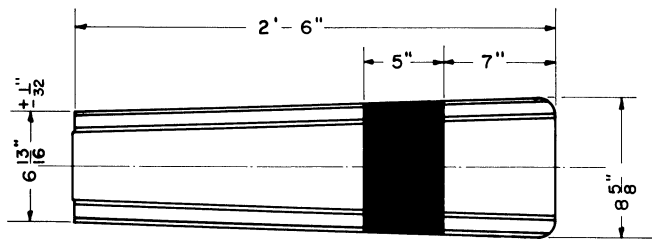
Indications not used on Item 2 should be fitted with blank disc secured from Zanesville.



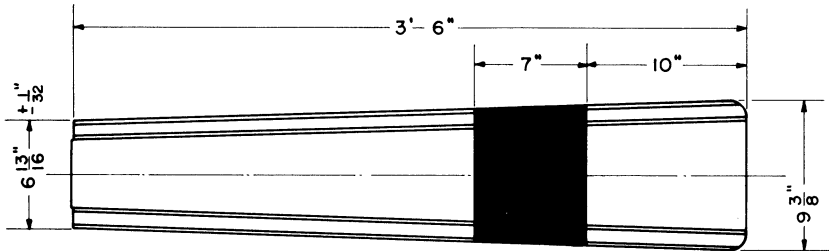
SECTION SHOWING METHOD OF MOUNTING CABLE STRAPS

Approved: *A.L. Jordan*
Signal Engineer

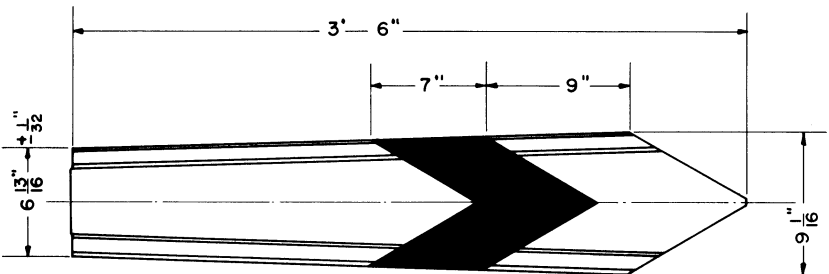
BALTIMORE & OHIO RAILROAD
FIXED APPROACH SIGNAL
Office of Signal Engineer
Baltimore, Md.
Sept. 24, 1951.



SIGNAL BLADE (Yellow Blade with Black Stripe) - **2371** - (for B.80)
 SIGNAL BLADE (Red Blade with White Stripe) - **2372**



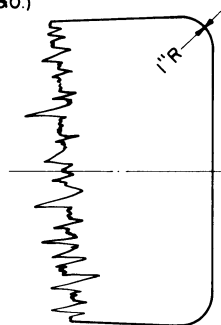
SIGNAL BLADE (Yellow Blade with Black Stripe) - **2373** - (for B.80.)
 SIGNAL BLADE (Red Blade with White Stripe) - **2374**



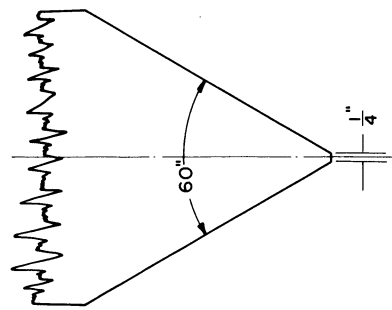
SIGNAL BLADE (Yellow Blade with Black Stripe) - **2375** - (for B.80.)

Notes:

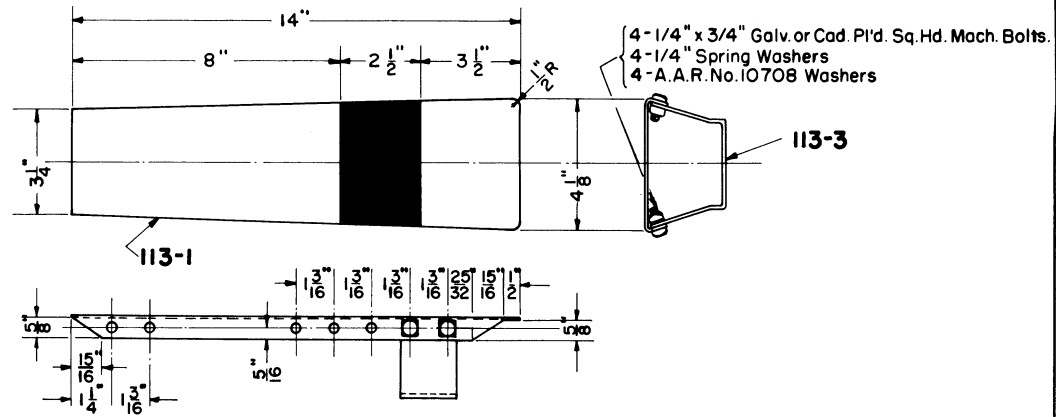
- Back of Signal Blades to be Black.
- Use Assembly 2373 for replacing Round End Blade on Train Order Semaphore Signals.



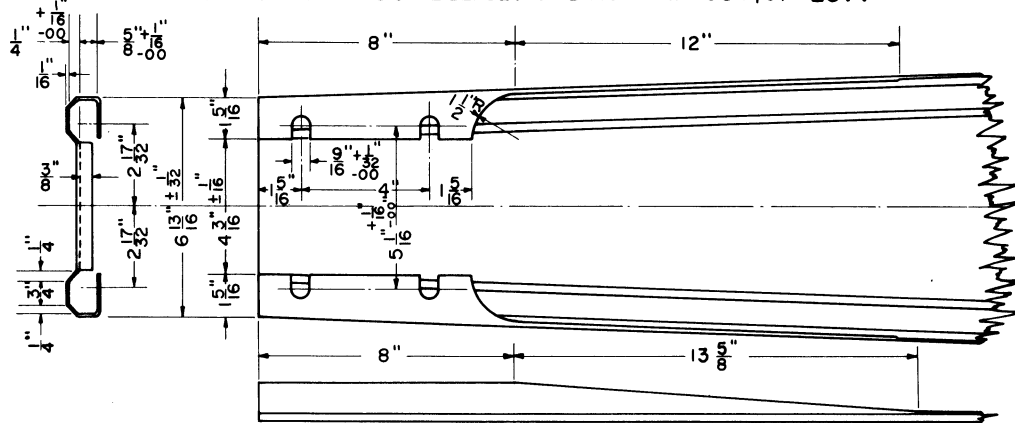
END OF SQUARE BLADE



END OF POINTED BLADE



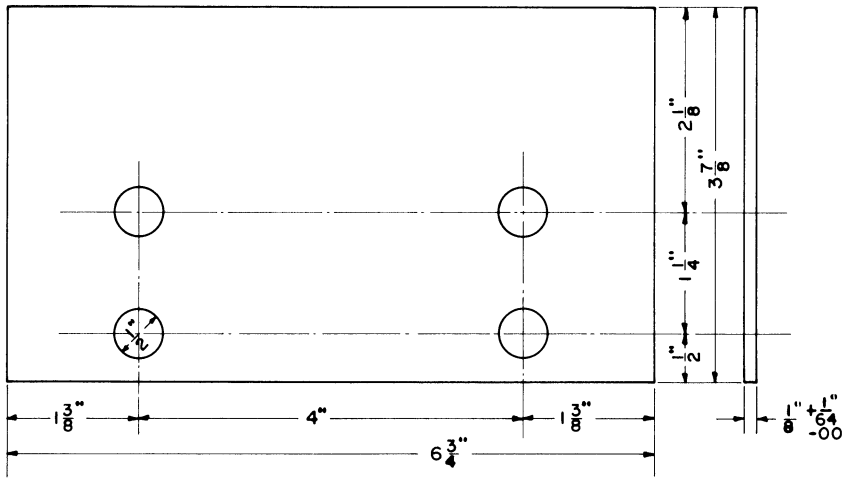
MECHANICAL DWARF SIGNAL BLADE (Yellow Blade with Black Stripe) - **2376** - (for B.80.)
 MECHANICAL DWARF SIGNAL BLADE (Red Blade with White Stripe) - **2377**



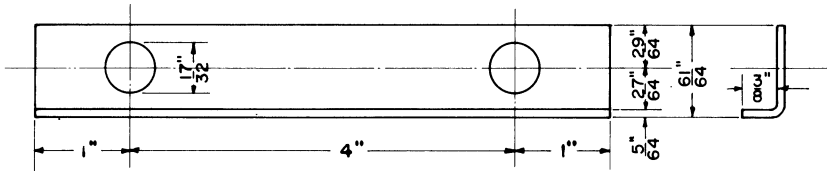
ENLARGED VIEW SHOWING BACK OF BLADES NOS.2371 TO 2375 INCL.

Approved: *C. F. Mearns*
 Chief Engr. Comm. & Sigs.

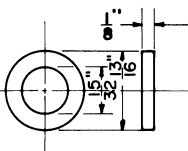
BALTIMORE & OHIO RAILROAD
SIGNAL BLADES
 Office of Chief Engineer Comm. & Signals
 Baltimore, Md.
 April 18, 1952



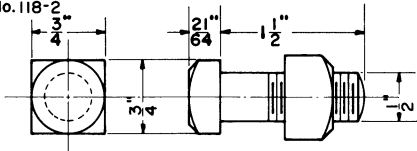
FELT LINER - 2378
Raco No. 118-1



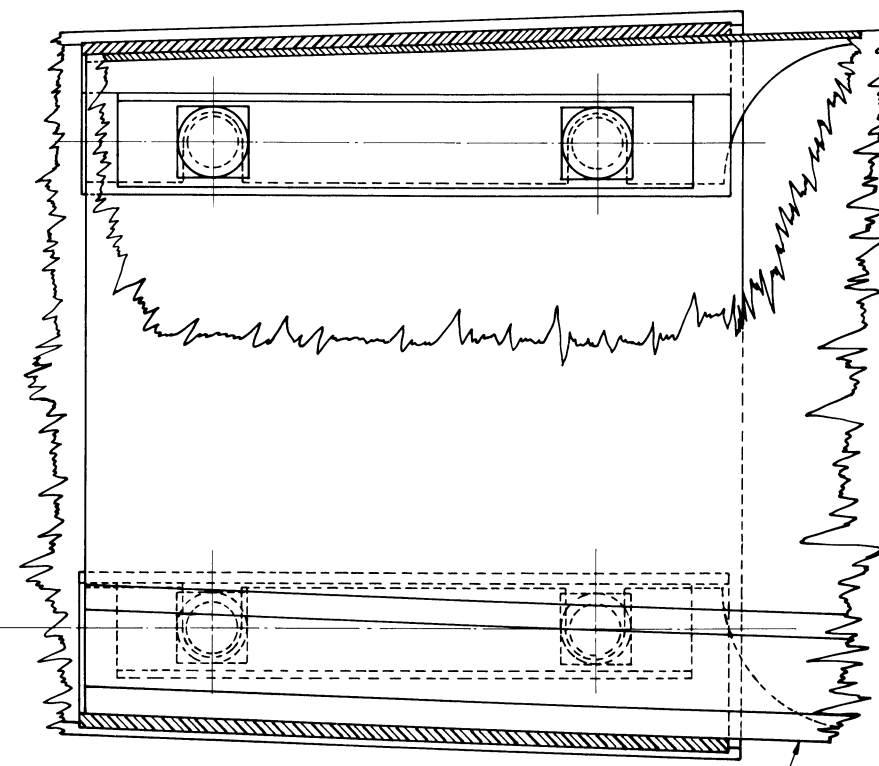
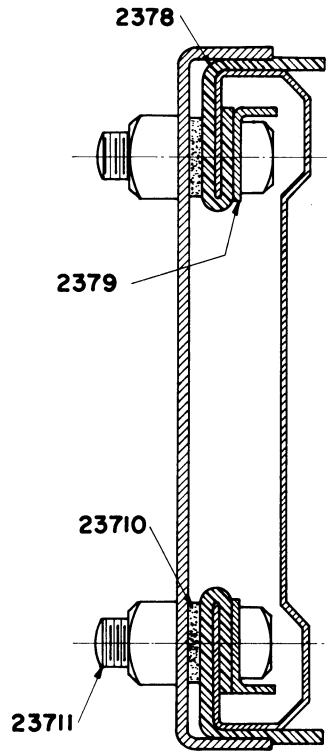
LOCKING STRIP - 2379
Hot Galvanized
Raco No. 118-2



FRICTION FIT WASHER - 23710
Special Compressed Asbestos
Raco No. 118-6

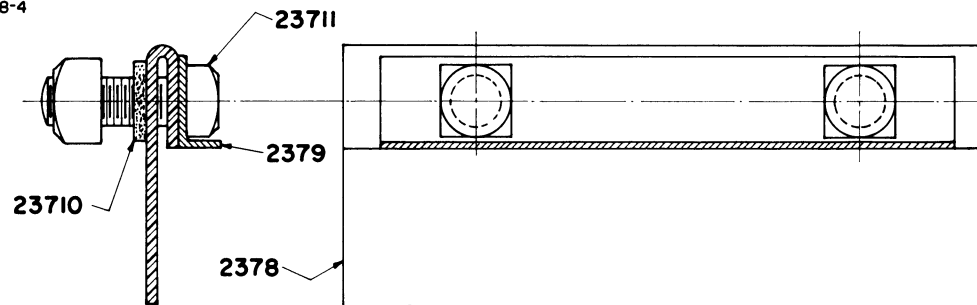


BOLT - 23711
Hot Galvanized
Raco No. 118-4



METHOD OF ATTACHING SIGNAL BLADE TO SPECTACLE

2371
to
2375



ASSEMBLY OF ATTACHMENT PARTS (2-Req'd) - 23712

Approved: *C. J. Stewart*
Chief Eng'r. Comm. & Sigs.

BALTIMORE & OHIO RAILROAD
SIGNAL BLADES
Office of Chief Engineer Comm. & Signals
Baltimore, Md.
April 18, 1952